

[www.visionaryhomes.com](http://www.visionaryhomes.com)



**Sale Price**

**\$339,990**

 1,453 Sq.Ft.

 3 Bedrooms

 2 Car Garage

VISIONARY SALE EVENT

*Ridgeline Park*



TOWNHOME & CONDO

**SPECIAL**

*Limited Time Offer!*

AVAILABLE ON QUICK MOVE-INS  
UNTIL MAY 31, 2024

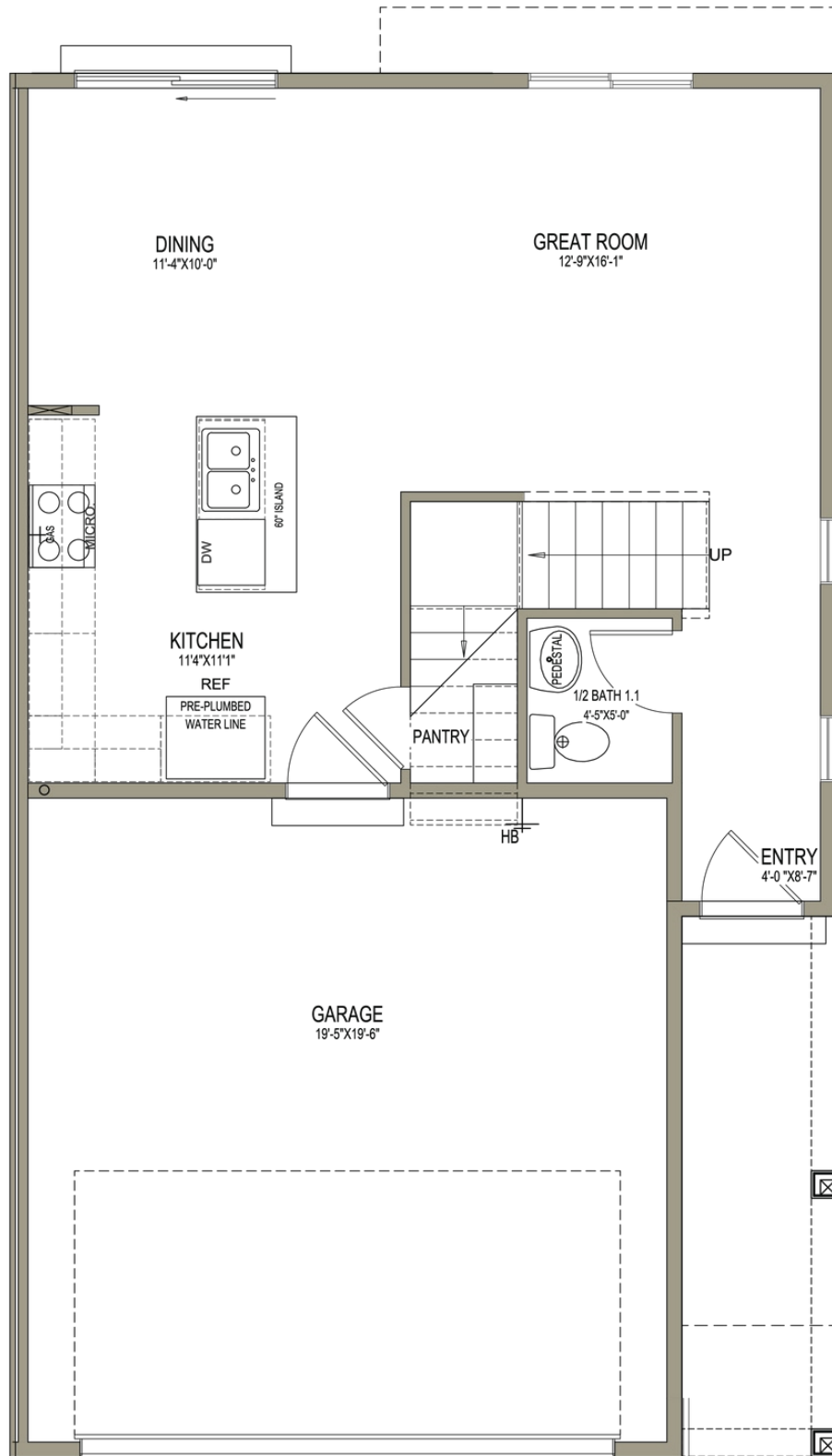
**6.25%**  
Fixed Rate

The Benton townhome provides ample windows, bringing plenty of natural light to your space. Featuring 3 beds and 2.5 baths, this townhome welcomes you in through the entry to the open living area with the family room, dining, and kitchen areas, along with a powder bathroom. The kitchen features a walk-in pantry and kitchen island for a functional, yet ideal cooking space. Upstairs you'll discover the primary suite featuring an ensuite bathroom and a spacious walk-in closet, 2 additional bedrooms, secondary bathroom, laundry room, and a loft to transform into a study or lounge space. Make the Benton yours today!

\*Visionary Homes reserves the right to change prices without notice.  
Approximate square footage and options shown in plan may not be included in base price.

**435.228.4702**  
[visionaryhomes.com](http://visionaryhomes.com)

## MAIN LEVEL - SLAB ON GRADE



## UPPER LEVEL

