

[www.visionaryhomes.com](http://www.visionaryhomes.com)


## Auburn

3 Elevations Available

 1,848 Total Sq.Ft.

 3 Bedrooms

 2 Bathrooms

 2 - 3 Car Garage

The Auburn Rambler floor plan has 3 beds and 2 baths, creating the perfect living space for your family by having the bedrooms right off the entry and main living space. The owner's suite next to the great room includes an owner's bathroom with a walk-in closet to better fit your needs. A mudroom off the garage provides room for all your go-to necessities from keys to schoolbooks and shoes, with the laundry nearby. In the kitchen, you'll find a large walk-in pantry and an island with a sink for ultimate convenience.



Craftsman



Farmhouse

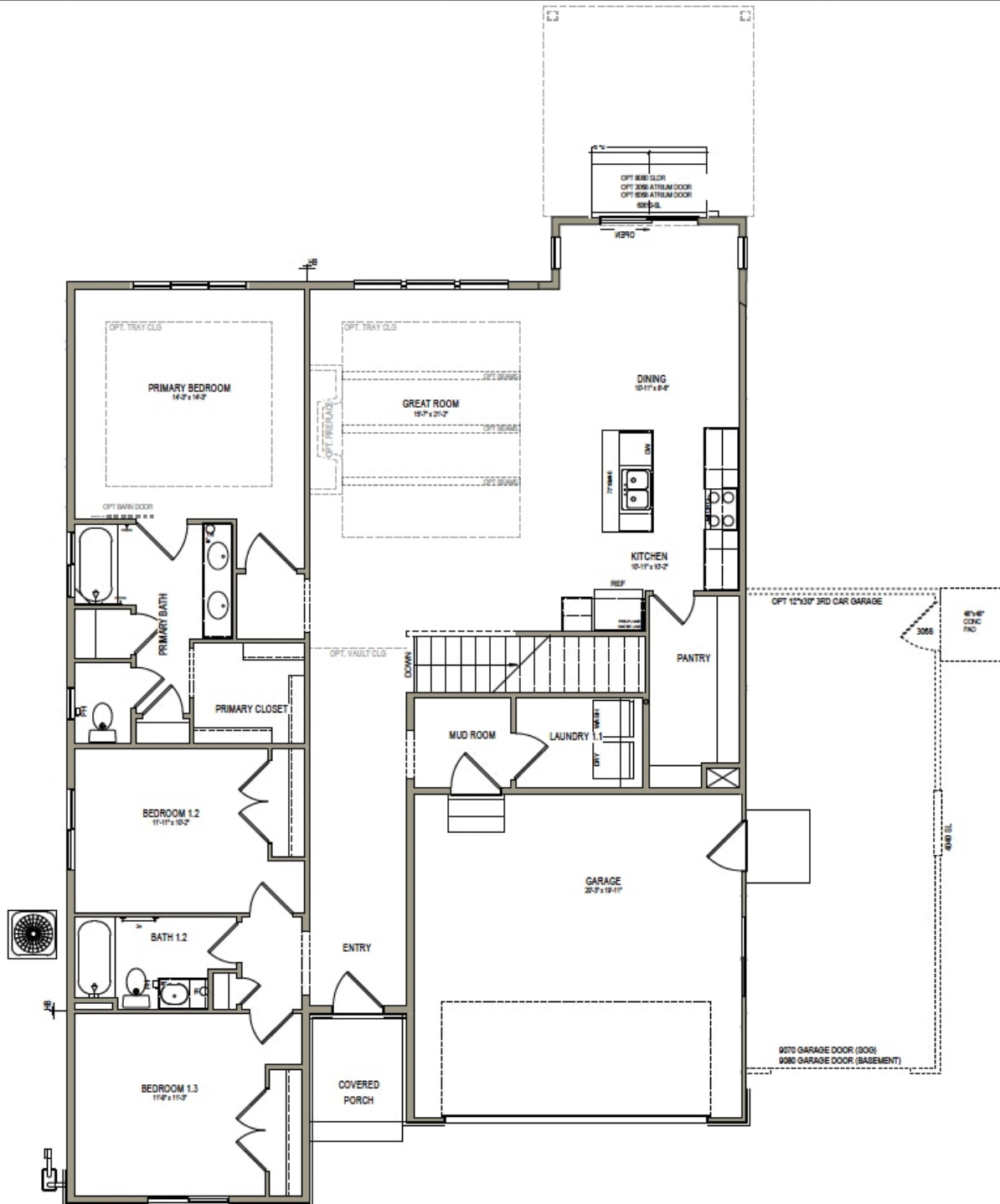


Traditional w/Stucco

\*Visionary Homes reserves the right to change prices without notice.  
Approximate square footage and options shown in plan may not be included in base price.

**435.228.4702**  
[visionaryhomes.com](http://visionaryhomes.com)

**MAIN LEVEL W/ UNFINISHED BASEMENT**



## BASEMENT

