

www.visionaryhomes.com


Fairview

3 Elevations Available

 2,961 Total Sq.Ft.

 1,540 Finished Sq.Ft.

 3 - 6 Bedrooms

 2 - 3 Bathrooms

 2 - 3 Car Garage

Let The Fairview invite you in as you'll be greeted by a spacious entry to the great room that is open to the dining and kitchen space. With a total of 3 bedrooms and 2 baths. On one side of the rambler home, you'll discover two bedrooms, a full bath, and a breathtaking owner's suite with a large walk-in closet and bathroom.



Craftsman



Farmhouse

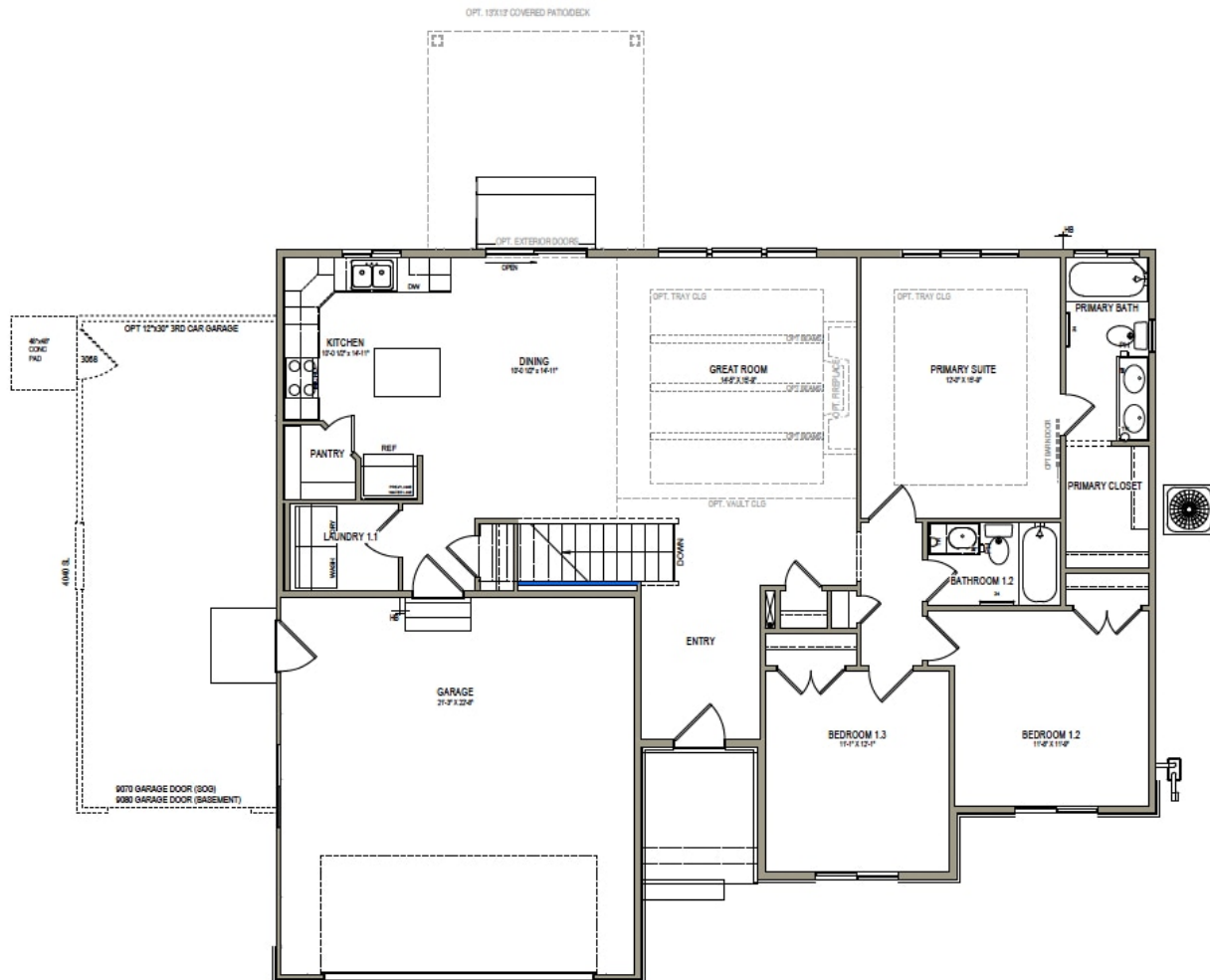


Traditional w/Stucco

*Visionary Homes reserves the right to change prices without notice.
Approximate square footage and options shown in plan may not be included in base price.

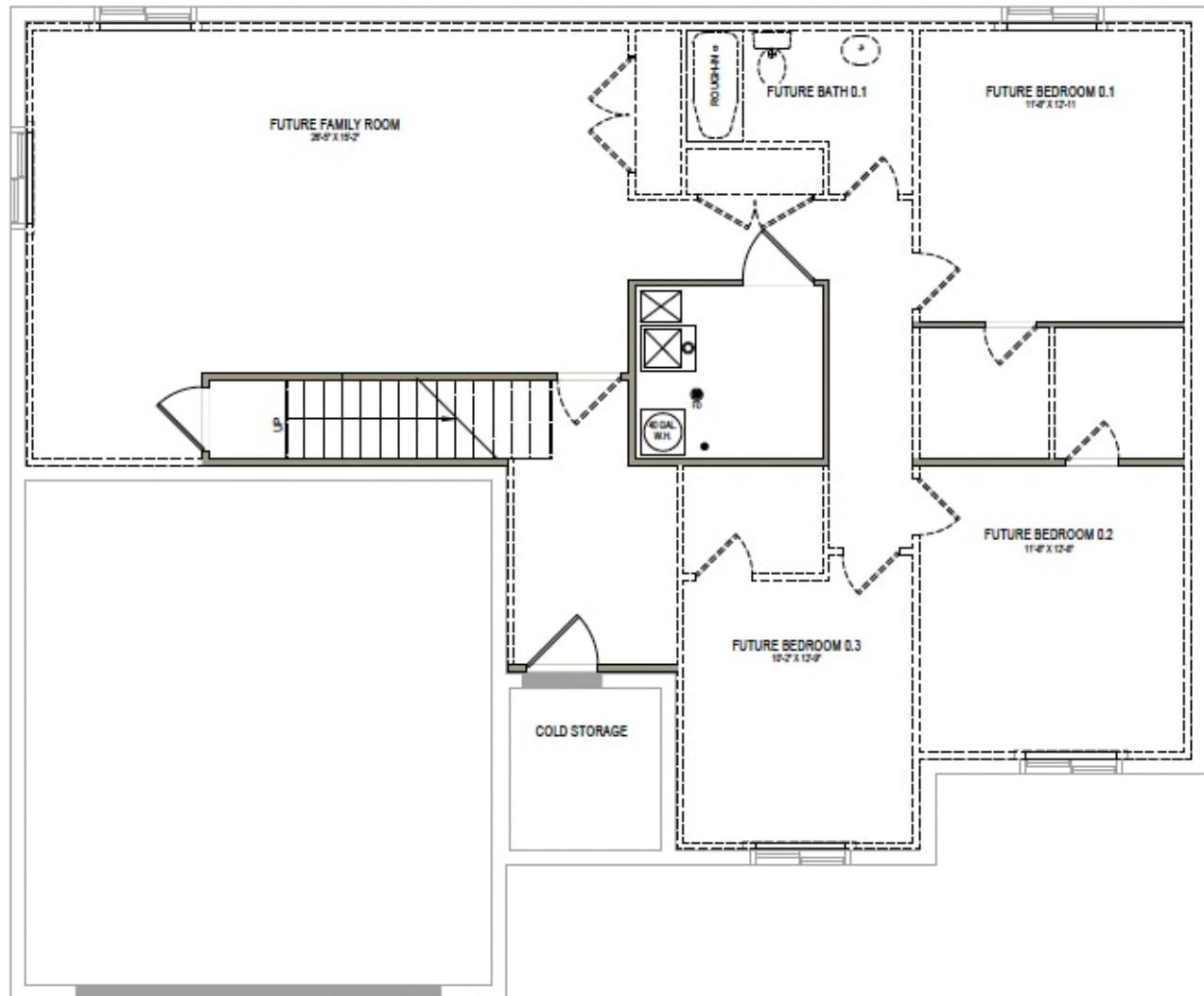
435.228.4702
visionaryhomes.com

MAIN LEVEL W/ UNFINISHED BASEMENT



www.visionaryhomes.com

UNFINISHED BASEMENT



*Visionary Homes reserves the right to change prices without notice.
Approximate square footage and options shown in plan may not be included in base price.

435.228.4702
visionaryhomes.com