

[www.visionaryhomes.com](http://www.visionaryhomes.com)


## Glendale

3 Elevations Available

 3,340 Total Sq.Ft.

 2,290 Finished Sq.Ft.

 3 - 7 Bedrooms

 2.5 - 3 Bathrooms

 2 - 3 Car Garage

With a stylish exterior and functional design, our Glendale floor plan is a charmer. Off the main entry, you'll discover a flex room and stairs leading to all the bedrooms upstairs. The main floor includes a large great room, dining, kitchen, and mudroom with a half bath. Upstairs hosts a spacious loft area, laundry room, two bedrooms, and the owner's suite with an owner's bathroom and large walk-in closet. With the option as a slab-on-grade or including an unfinished basement.



Craftsman



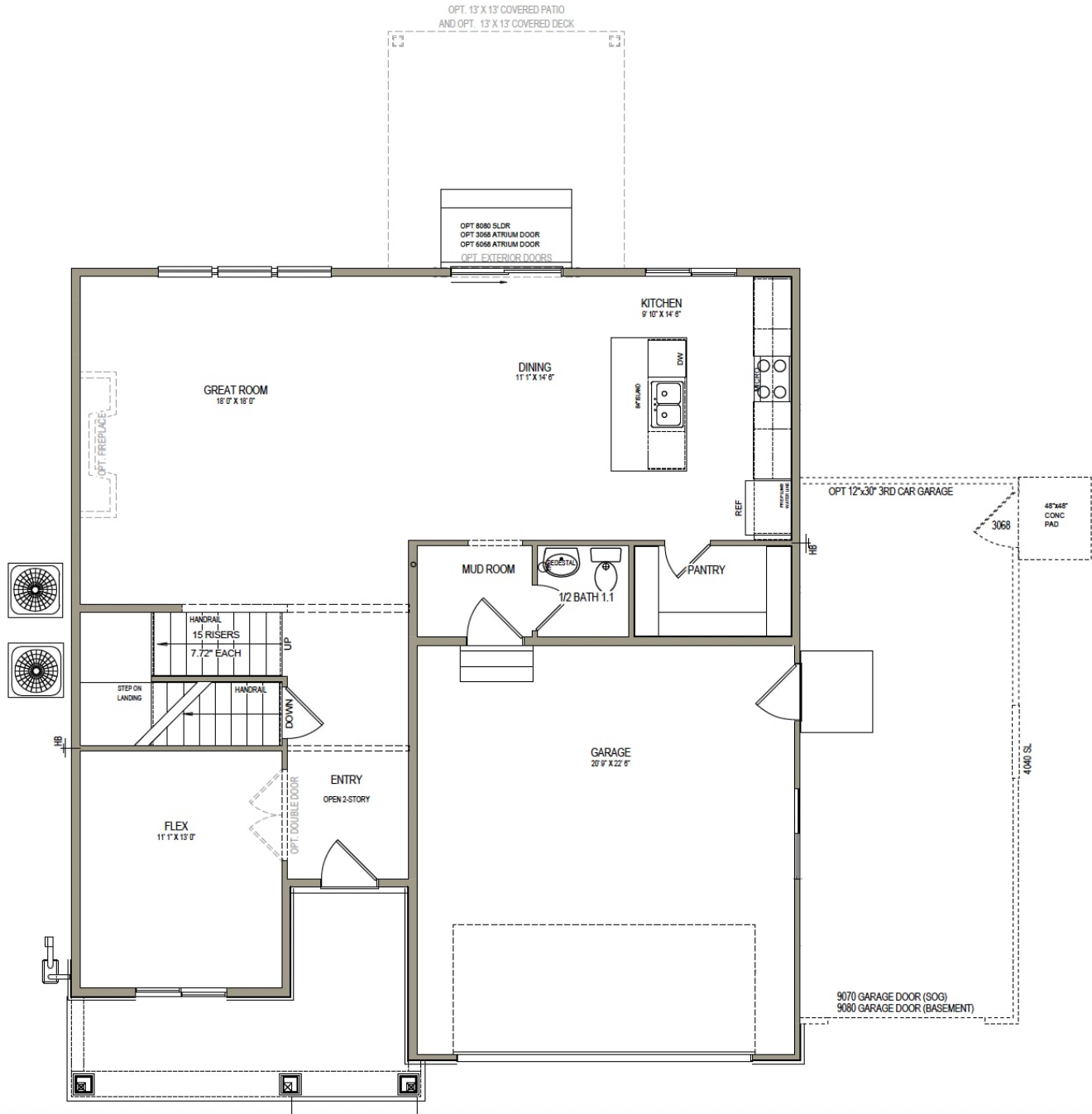
Farmhouse



Traditional w/Stucco

\*Visionary Homes reserves the right to change prices without notice.  
Approximate square footage and options shown in plan may not be included in base price.

**435.228.4702**  
[visionaryhomes.com](http://visionaryhomes.com)

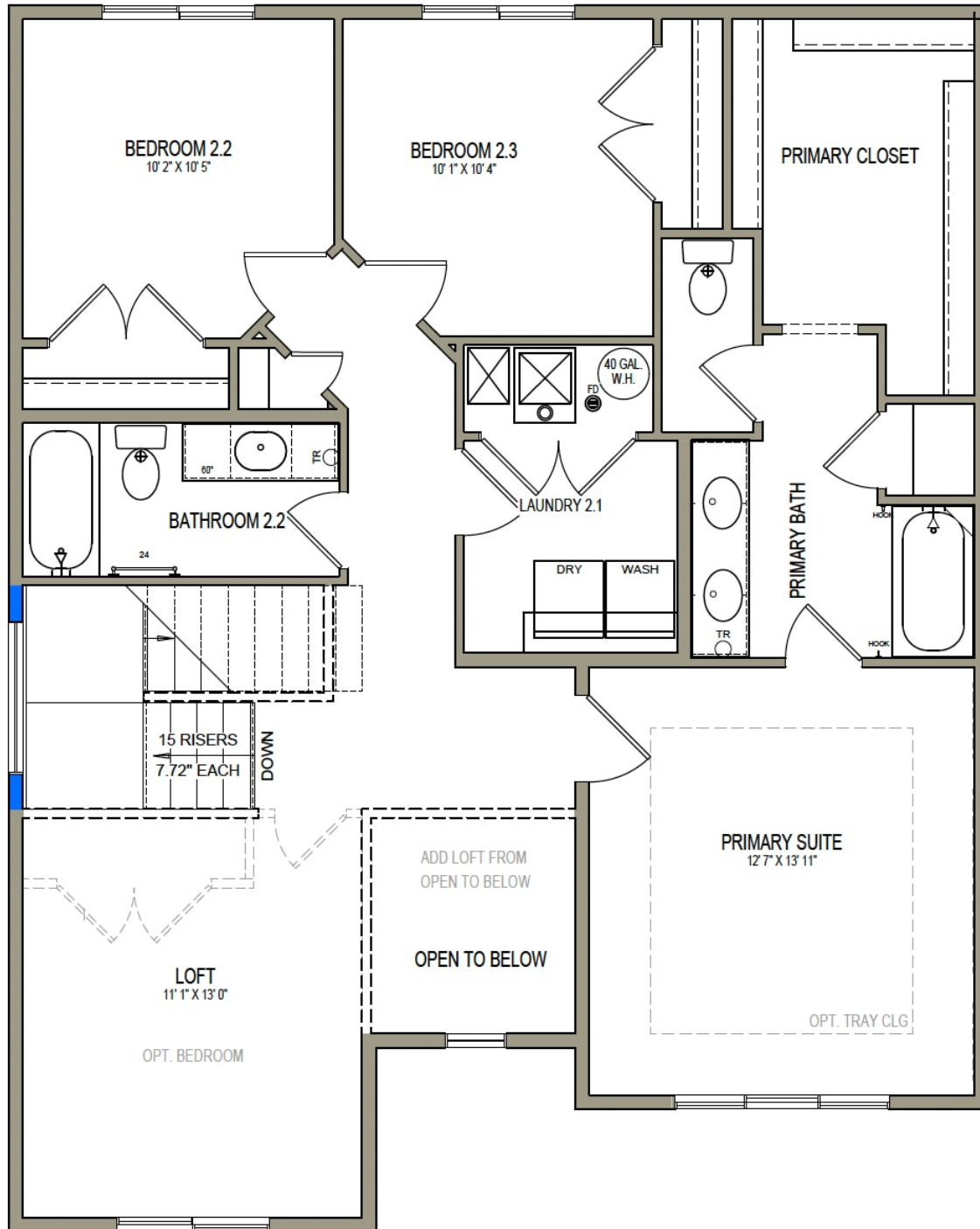
[www.visionaryhomes.com](http://www.visionaryhomes.com)
**MAIN LEVEL W/UNFINISHED BASEMENT**


\*Visionary Homes reserves the right to change prices without notice.  
Approximate square footage and options shown in plan may not be included in base price.

**435.228.4702**  
[visionaryhomes.com](http://visionaryhomes.com)

[www.visionaryhomes.com](http://www.visionaryhomes.com)

## UPPER LEVEL



\*Visionary Homes reserves the right to change prices without notice.  
 Approximate square footage and options shown in plan may not be included in base price.

**435.228.4702**  
[visionaryhomes.com](http://visionaryhomes.com)

## UNFINISHED BASEMENT

