

www.visionaryhomes.com


Glendale

3 Elevations Available

 3,342 Total Sq.Ft.

 2,290 Finished Sq.Ft.

 3 - 4 Bedrooms

 2.5 - 3 Bathrooms

 2 - 3 Car Garage

With a stylish exterior and functional design, our Glendale floor plan is a charmer. Off the main entry you'll discover a flex room and stairs leading to all the bedrooms upstairs. The main floor includes a large great room, dining, kitchen, and mudroom with a half bath. Upstairs hosts a spacious loft area, laundry room, two bedrooms and the owner's suite with an owner's bathroom and large walk-in closet. With a total of 3 bedrooms and 2.5 baths, and an optional finished basement for an additional 3 bedrooms, bathroom, and family room. Ask your agent for more information.



Craftsman

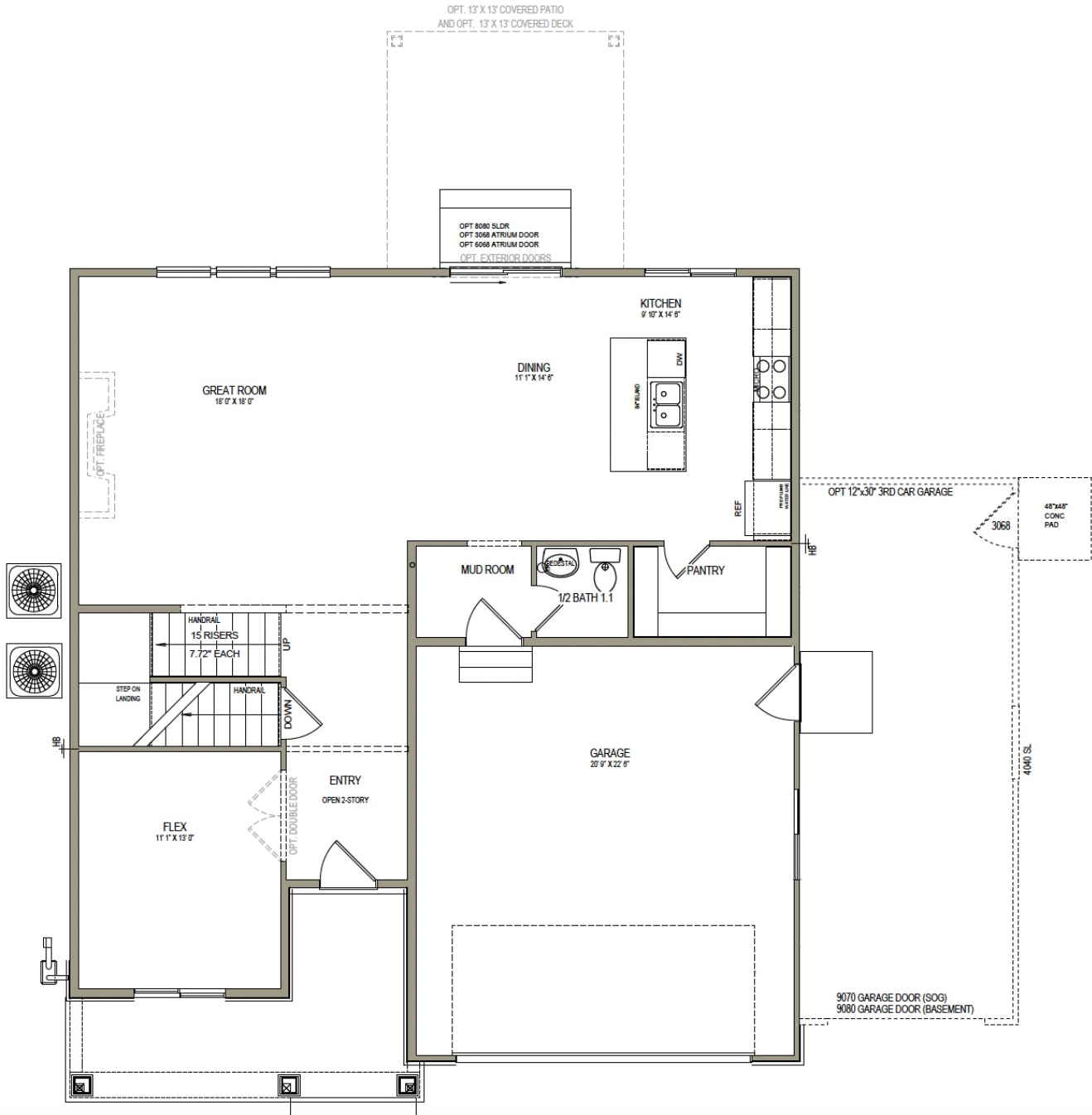


Farmhouse

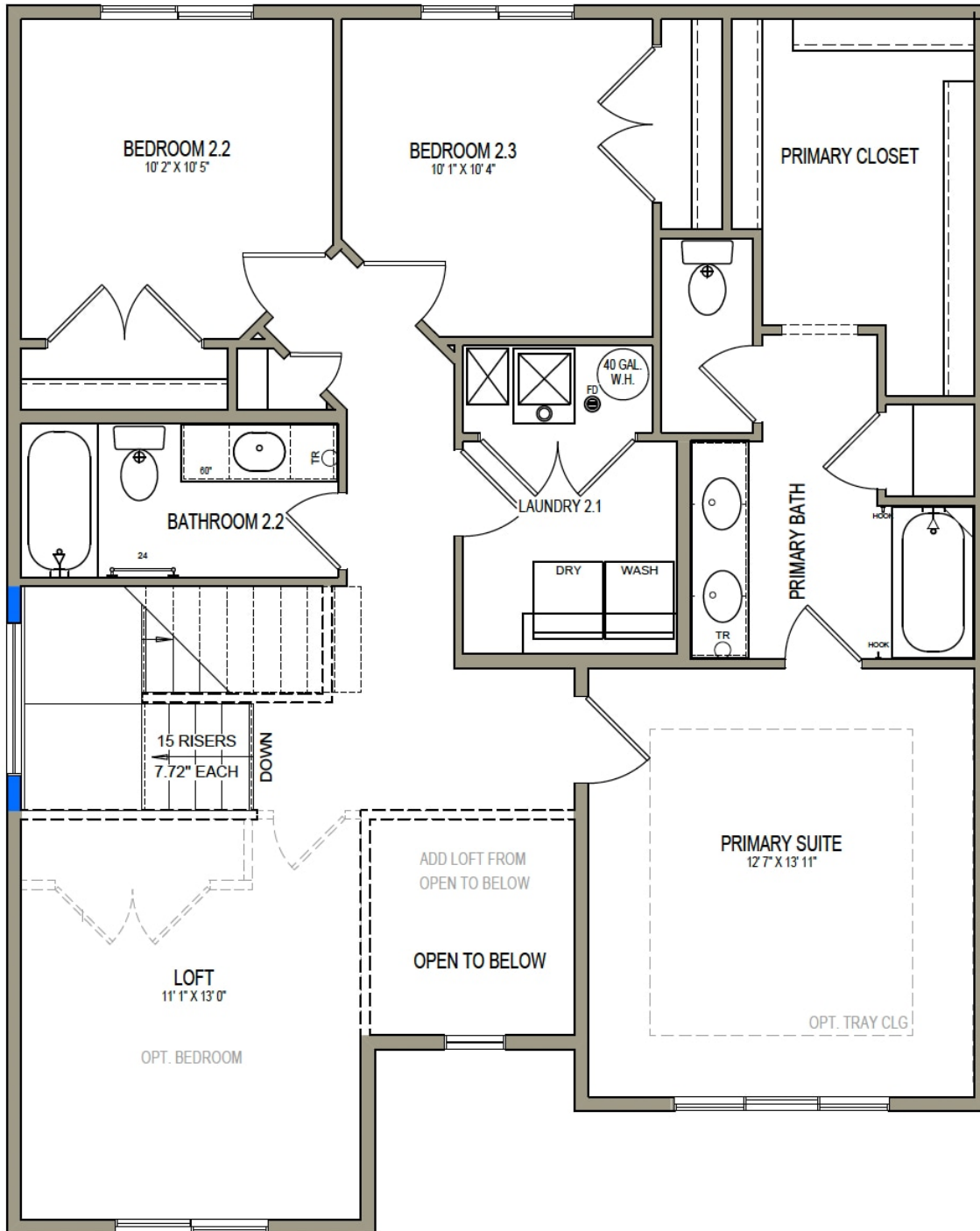


Traditional w/Stucco

MAIN LEVEL W/UNFINISHED BASEMENT

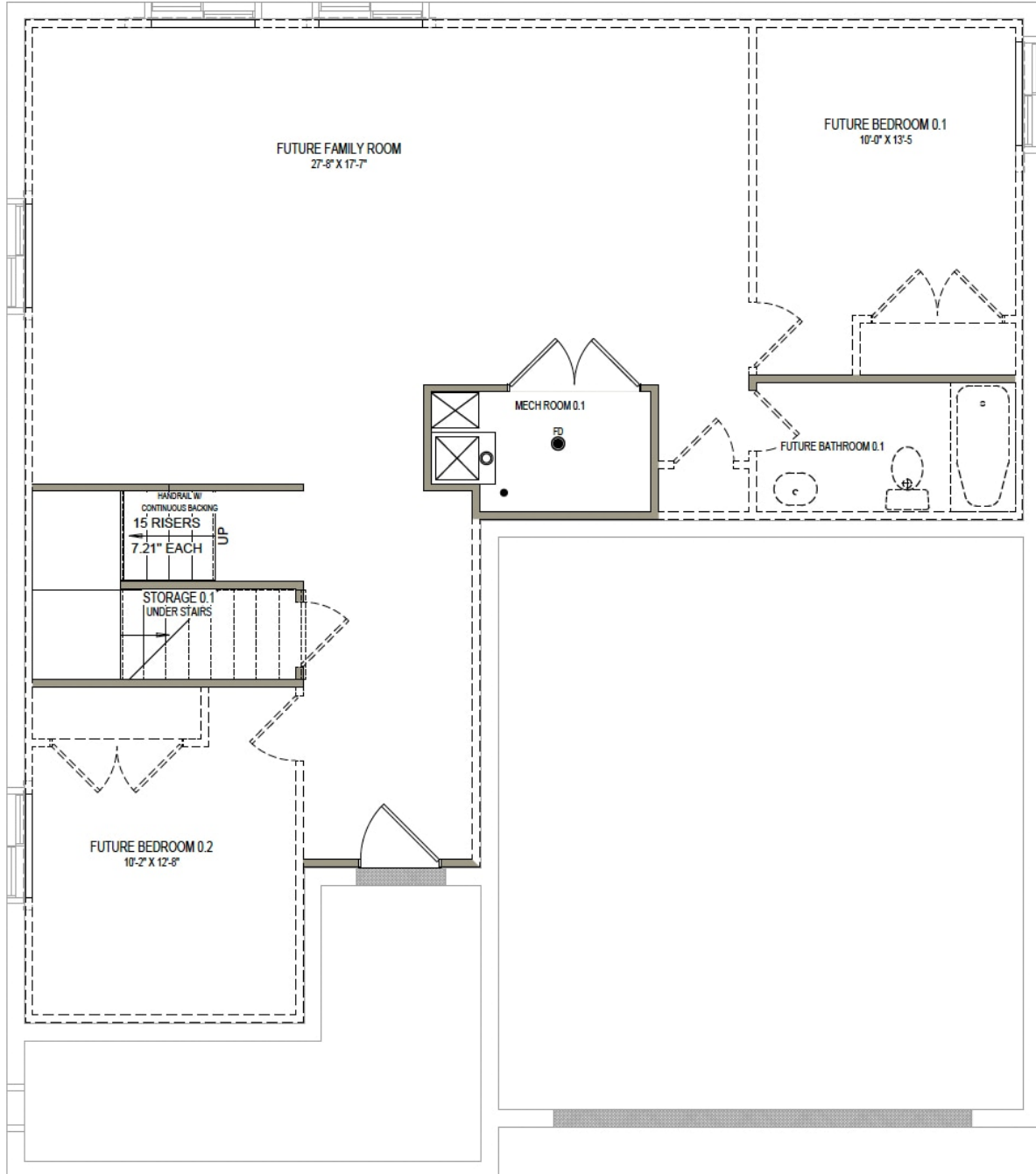


UPPER LEVEL



www.visionaryhomes.com

UNFINISHED BASEMENT



*Visionary Homes reserves the right to change prices without notice.
Approximate square footage and options shown in plan may not be included in
base price.

435.228.4702
visionaryhomes.com