

www.visionaryhomes.com


Hilldale

3 Elevations Available

 2,432 Total Sq.Ft.

 1,263 Finished Sq.Ft.

 3 - 6 Bedrooms

 2 - 3 Bathrooms

 2 - 3 Car Garage

Enjoy your ideal lifestyle in the Hilldale rambler floor plan featuring 3 beds and 2 baths. With an open-concept main living space right when you enter showcasing the family room, kitchen, and dining for everything from cooking, lounging, and socializing with the family. Discover a hallway off the kitchen leading into the bedrooms, laundry, and bathroom. With the bedrooms facing the back of the home and the owner's suite on the other side for a secluded, comfy feel so you can relax and unwind, including an owner's bath and walk-in closet. Add more living space through an optional finished basement which gives room to 3 more bedrooms, a bathroom, family room, and storage space. Each bedroom features large walk-in closets for additional space for your everyday things.



Craftsman

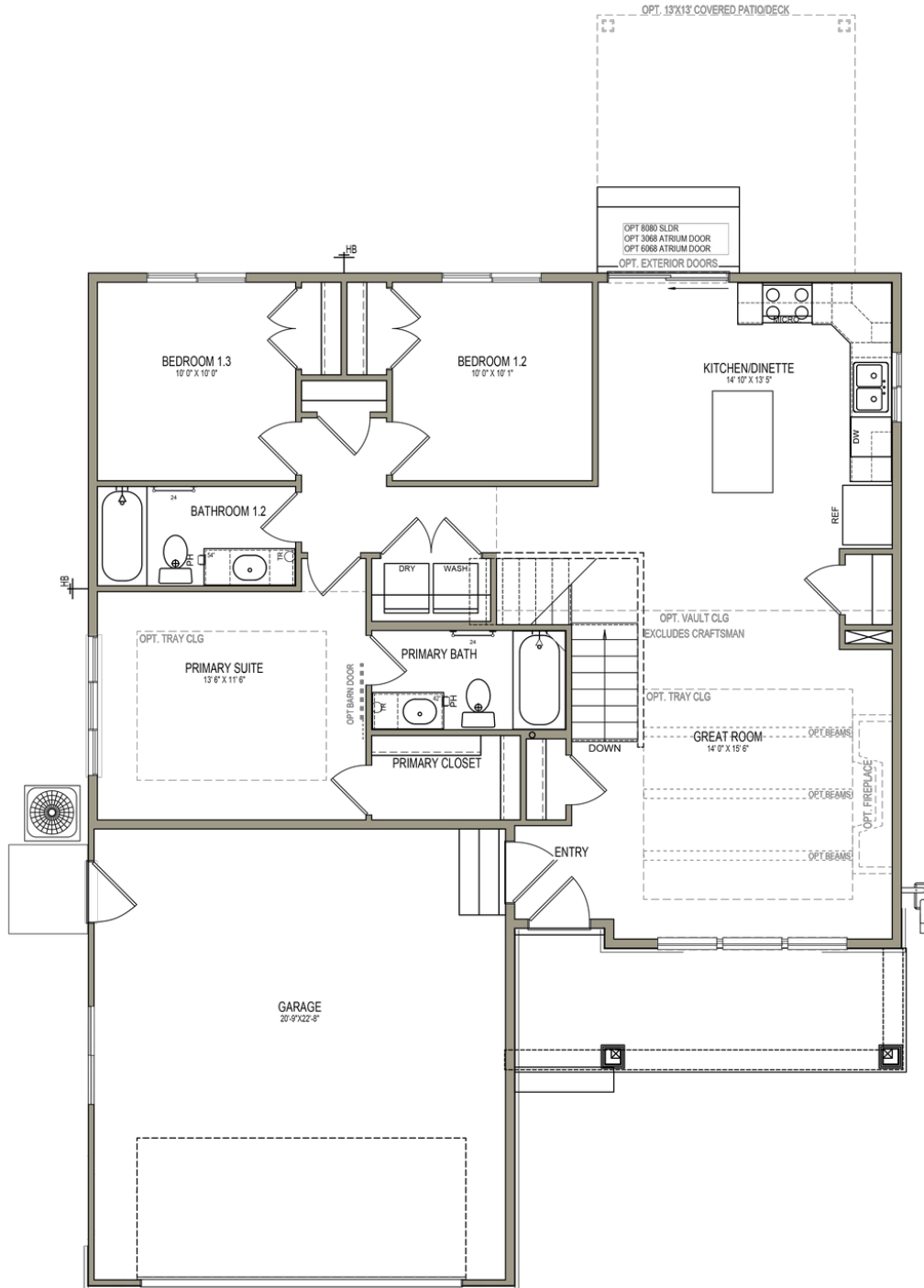


Farmhouse



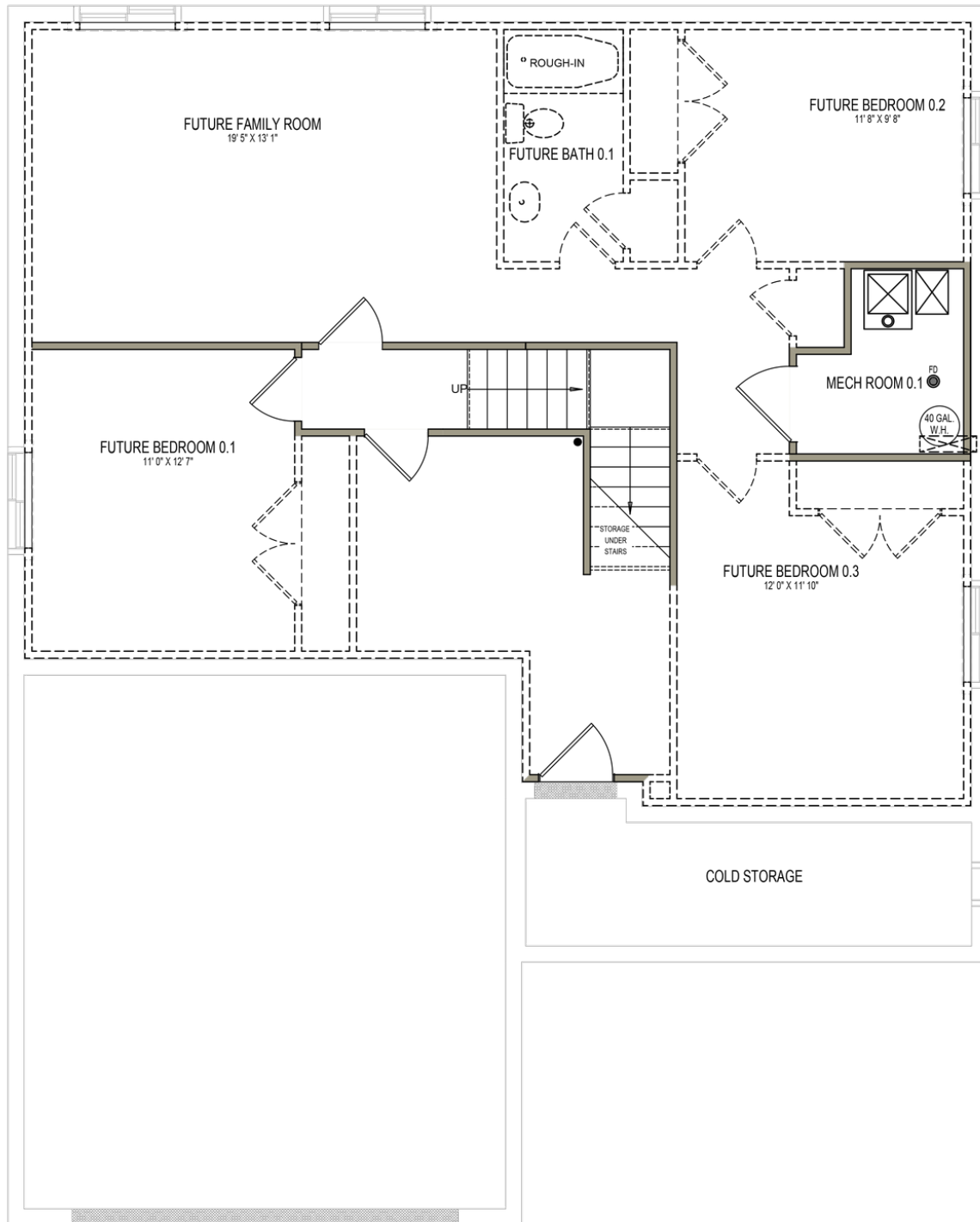
Traditional w/Stucco

MAIN LEVEL W/ UNFINISHED BASEMENT



www.visionaryhomes.com

UNFINISHED BASEMENT



*Visionary Homes reserves the right to change prices without notice.
Approximate square footage and options shown in plan may not be included in
base price.

435.228.4702
visionaryhomes.com