

# THE INGLEBROOK



ELEVATION "A"



ELEVATION "B"

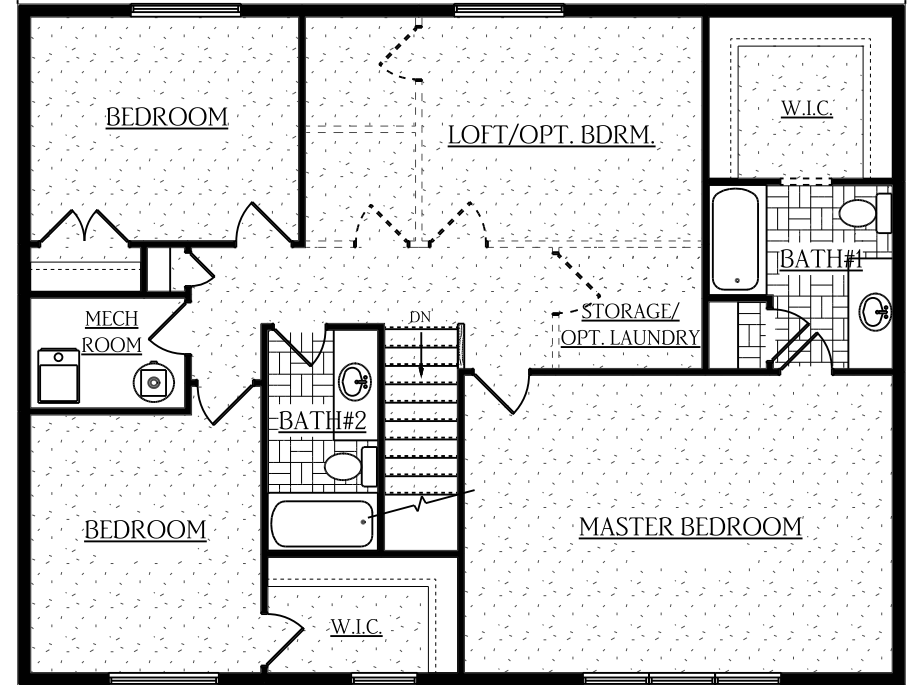
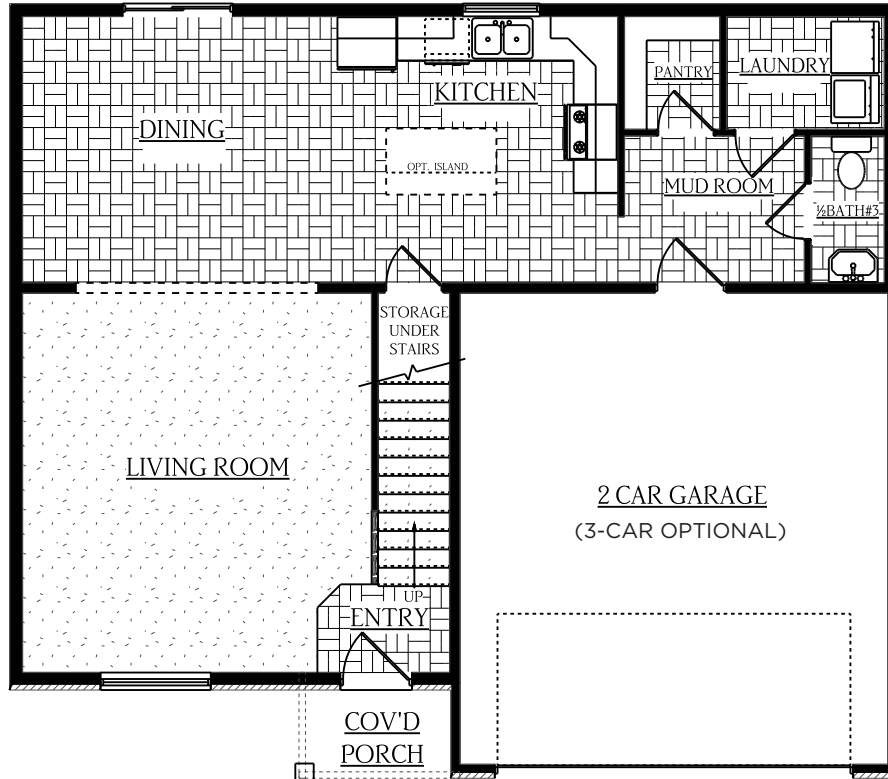
# THE INGLEBROOK

3-4 BEDS | 2.5 BATHS | 2 CAR GARAGE

TOTAL SQUARE FEET\*: 3,025 (including 890 sq. ft. unfinished basement) | Dimensions: 40' x 35'

MAIN LEVEL | 890 SQ. FT.

UPPER LEVEL | 1,245 SQ. FT.



*\*Plans and square footage are approximate and subject to change.*