

[www.visionaryhomes.com](http://www.visionaryhomes.com)



## Greystone

3 Elevations Available

 1,794 Total Sq.Ft.

 3 Bedrooms

 2.5 Bathrooms

 2 - 3 Car Garage

With a contemporary design in every aspect, The Greystone floor plan is a beauty. Including 3 bedrooms and 2.5 baths, this 2-story floor plan provides the space you need in style. At the entrance, you'll discover a powder bath and hallway into the open concept living space. The kitchen features a large pantry to store all your kitchen necessities, with the great room having an optional fireplace to warm up the room during the winter months. A bright loft space with windows at the top of the stairs welcomes you into the resting space upstairs, with the owner's suite, owner's bath, spacious walk-in closet, bedrooms, convenient laundry, and bathroom.



Craftsman



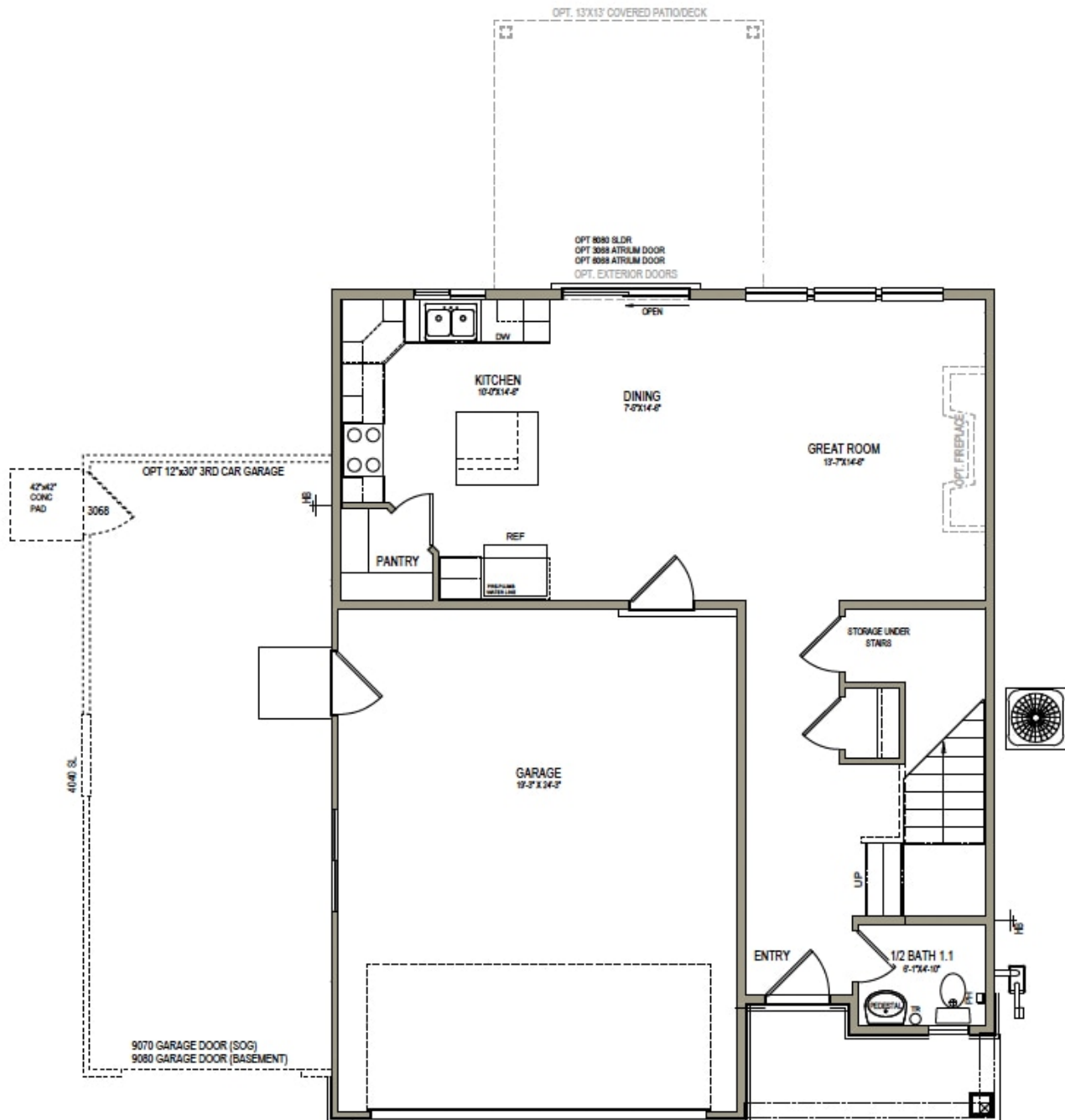
Farmhouse



Traditional w/Stucco

[www.visionaryhomes.com](http://www.visionaryhomes.com)

## MAIN LEVEL - SLAB ON GRADE

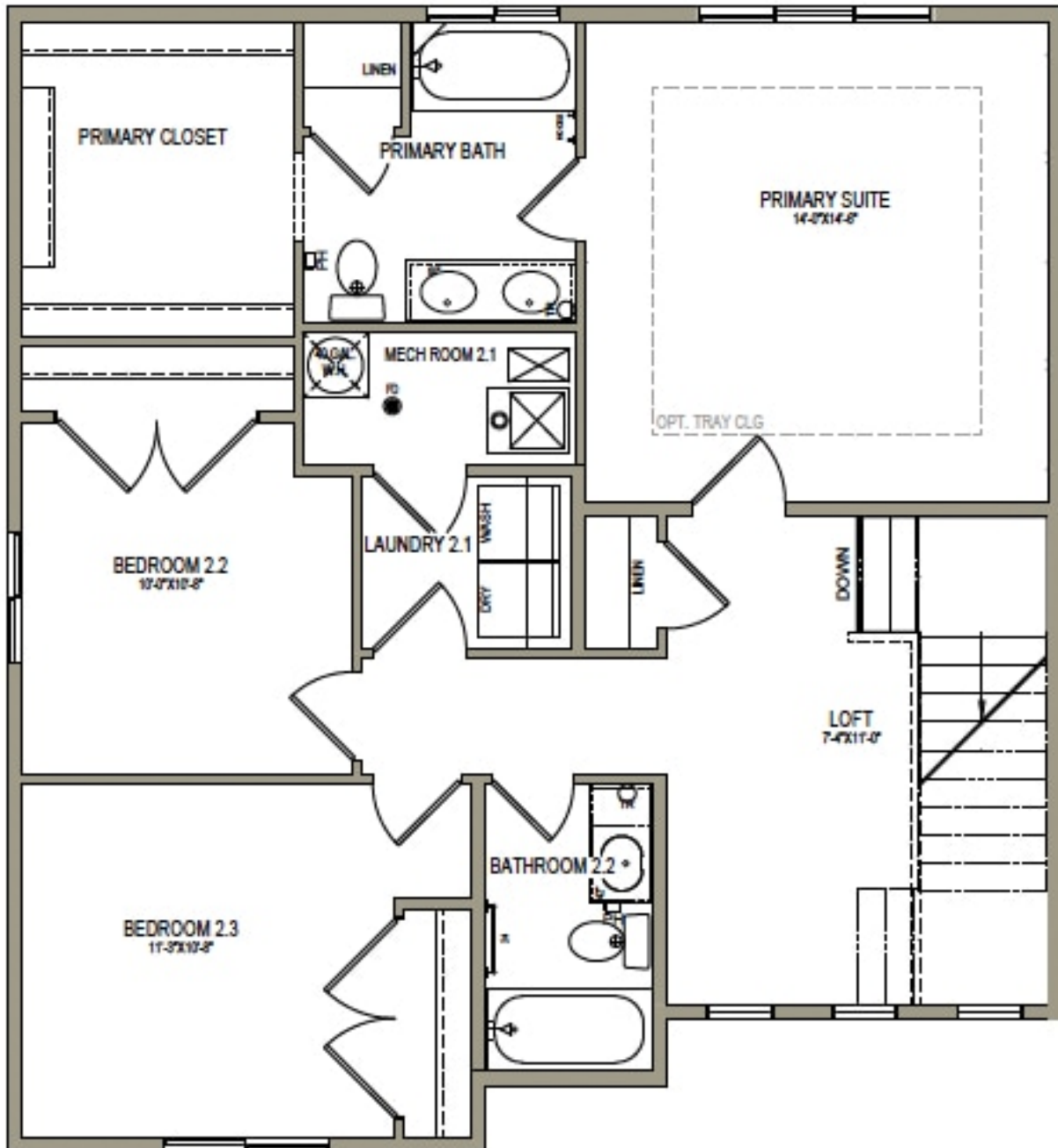


\*Visionary Homes reserves the right to change prices without notice.  
Approximate square footage and options shown in plan may not be included in base price.

435.228.4702  
[visionaryhomes.com](http://visionaryhomes.com)

[www.visionaryhomes.com](http://www.visionaryhomes.com)

UPPER LEVEL



\*Visionary Homes reserves the right to change prices without notice.  
Approximate square footage and options shown in plan may not be included in base price.

435.228.4702  
[visionaryhomes.com](http://visionaryhomes.com)