

www.visionaryhomes.com


Hawthorne

3 Elevations Available

 2,442 Total Sq.Ft.

 1,268 Finished Sq.Ft.

 2 - 5 Bedrooms

 2 - 3 Bathrooms

 2 Car Garage

The Hawthorne features an open and airy great room, kitchen, and dining area on the main floor, making it perfect for entertaining. The main floor includes a spacious owner's suite with a luxurious bath. A convenient laundry room and an additional bedroom are also located on the main floor. The Hawthorne offers a slab-on-grade foundation, or an unfinished basement, making it suitable for a variety of lifestyles. With 4 different exterior elevations to choose from, the Hawthorne is a stylish and functional Rambler that is sure to meet all of your needs.



Craftsman



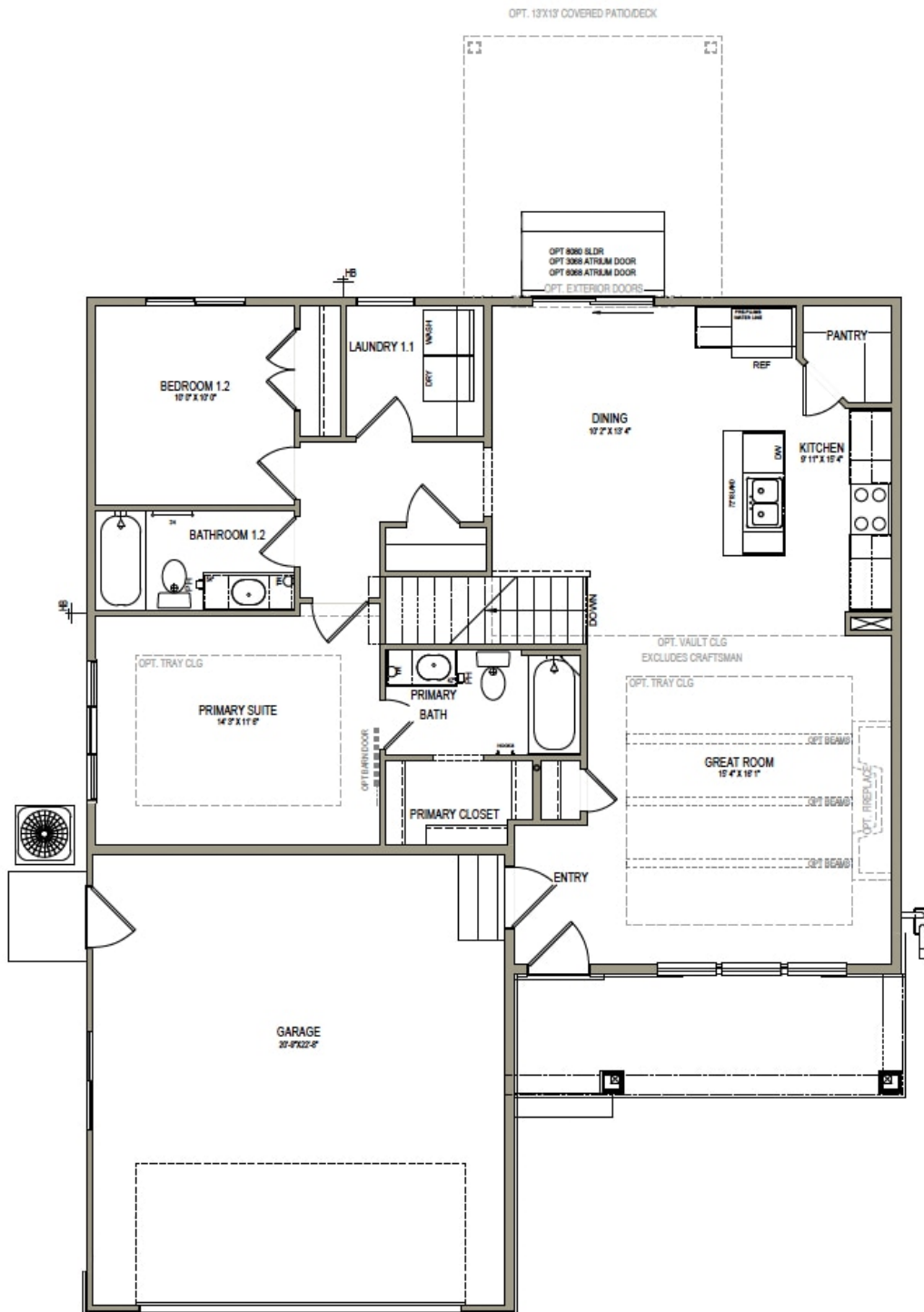
Farmhouse



Traditional w/Stucco

*Visionary Homes reserves the right to change prices without notice.
Approximate square footage and options shown in plan may not be included in base price.

435.228.4702
visionaryhomes.com

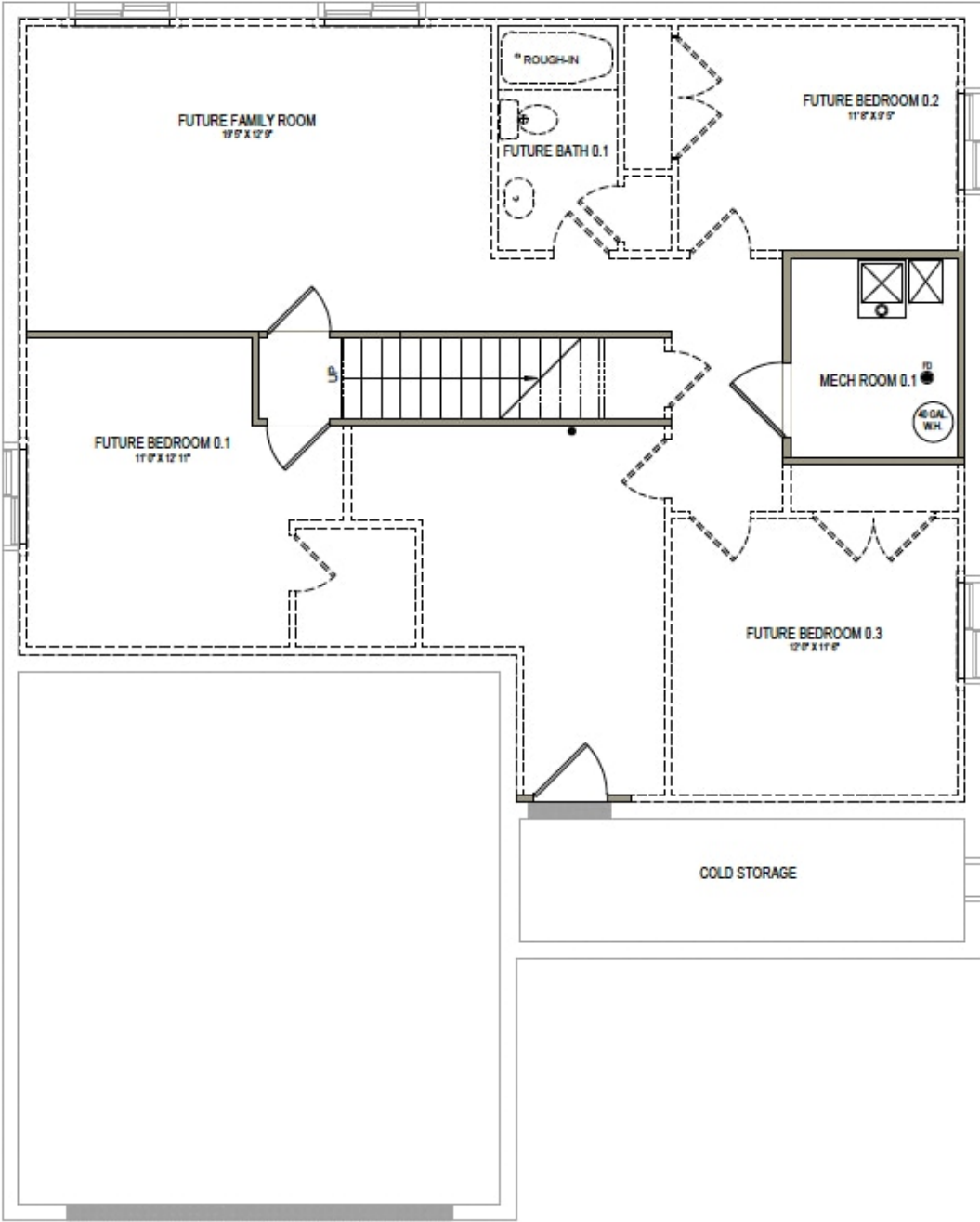


435.228.4702
visionaryhomes.com



www.visionaryhomes.com

UNFINISHED BASEMENT



*Visionary Homes reserves the right to change prices without notice.
Approximate square footage and options shown in plan may not be included in base price.