

[www.visionaryhomes.com](http://www.visionaryhomes.com)


## Huckleberry

4 Elevations Available

 1,764 Total Sq.Ft.

 3 Bedrooms

 2.5 Bathrooms

 2 Car Garage

Discover the spacious main living space the Huckleberry exterior townhome unit has to offer, with a great room and kitchen. The kitchen features a kitchen island for your cooking needs and a large pantry. Upstairs you'll find a roomy loft for turning into anything from a lounge space to work area. Enter the owner's suite to find an owner's bath and a walk-in closet that provides plenty of space for your clothing to accessories. This slab-on-grade townhome showcases 3 bedrooms, 2.5 bathrooms, and a 2-car garage.

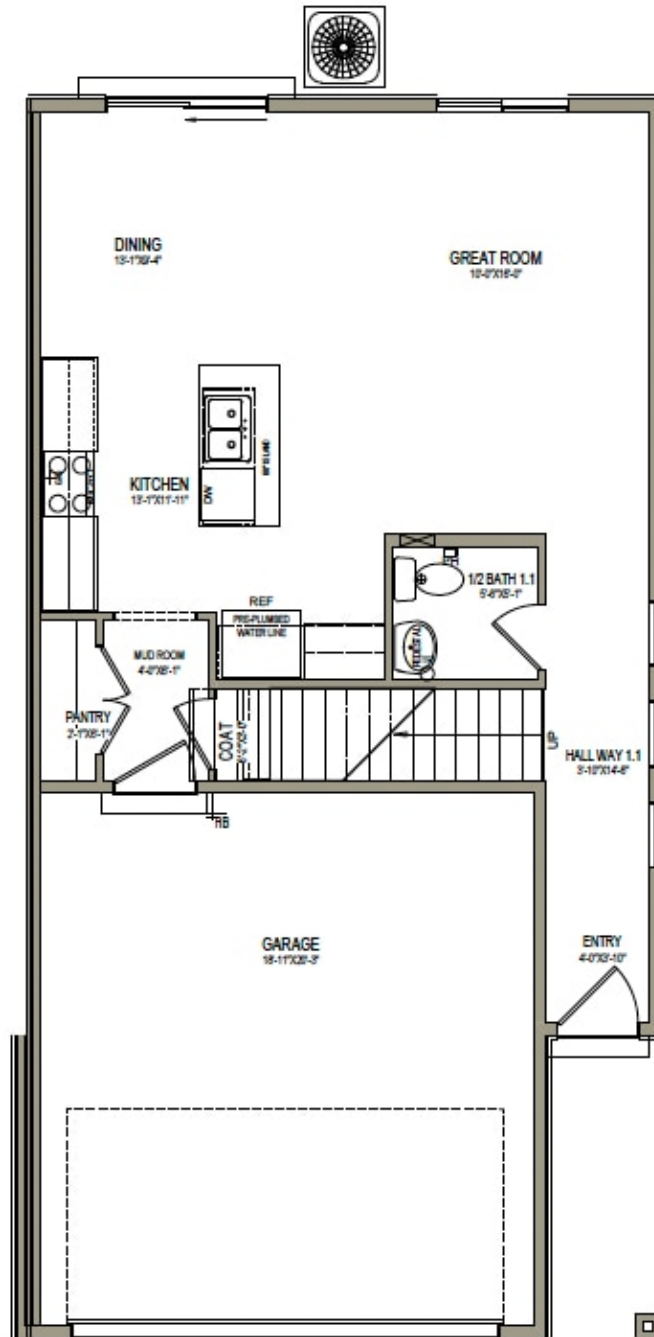


[www.visionaryhomes.com](http://www.visionaryhomes.com)



[www.visionaryhomes.com](http://www.visionaryhomes.com)

## MAIN LEVEL

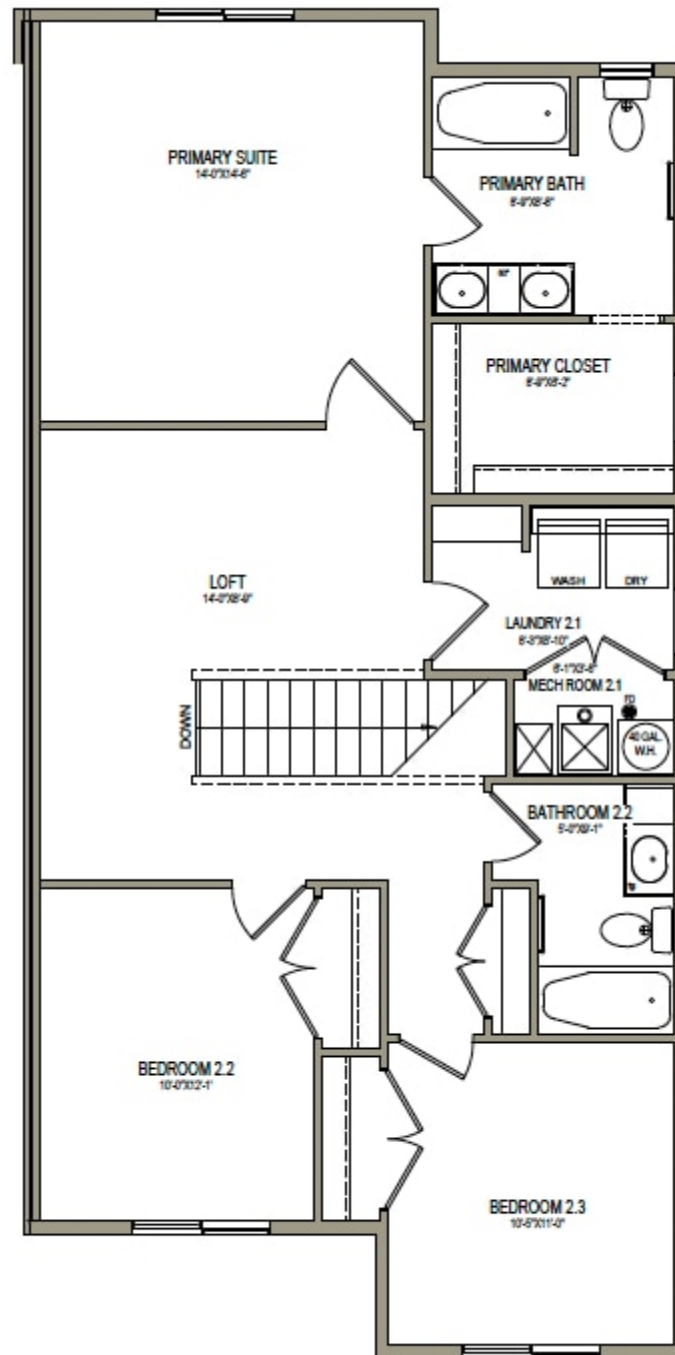


\*Visionary Homes reserves the right to change prices without notice.  
Approximate square footage and options shown in plan may not be included in base price.

**435.228.4702**  
[visionaryhomes.com](http://visionaryhomes.com)

[www.visionaryhomes.com](http://www.visionaryhomes.com)

## UPPER LEVEL



\*Visionary Homes reserves the right to change prices without notice.  
Approximate square footage and options shown in plan may not be included in  
base price.

435.228.4702  
[visionaryhomes.com](http://visionaryhomes.com)