

www.visionaryhomes.com


Rosewood

4 Elevations Available

 1,778 Total Sq.Ft.

 3 Bedrooms

 2.5 Bathrooms

 2 Car Garage

Discover the spacious main living space the Rosewood interior townhome has to offer, with a great room and kitchen. The kitchen features a kitchen island for your cooking needs and a large pantry. Upstairs you'll find a roomy loft for turning into anything from a lounge space to work area. Enter the owner's suite to find an owner's bath and a walk-in closet that provides plenty of space for your clothing to accessories. This slab-on-grade townhome showcases 3 bedrooms, 2.5 bathrooms, and a 2-car garage.



*Visionary Homes reserves the right to change prices without notice.
Approximate square footage and options shown in plan may not be included in base price.

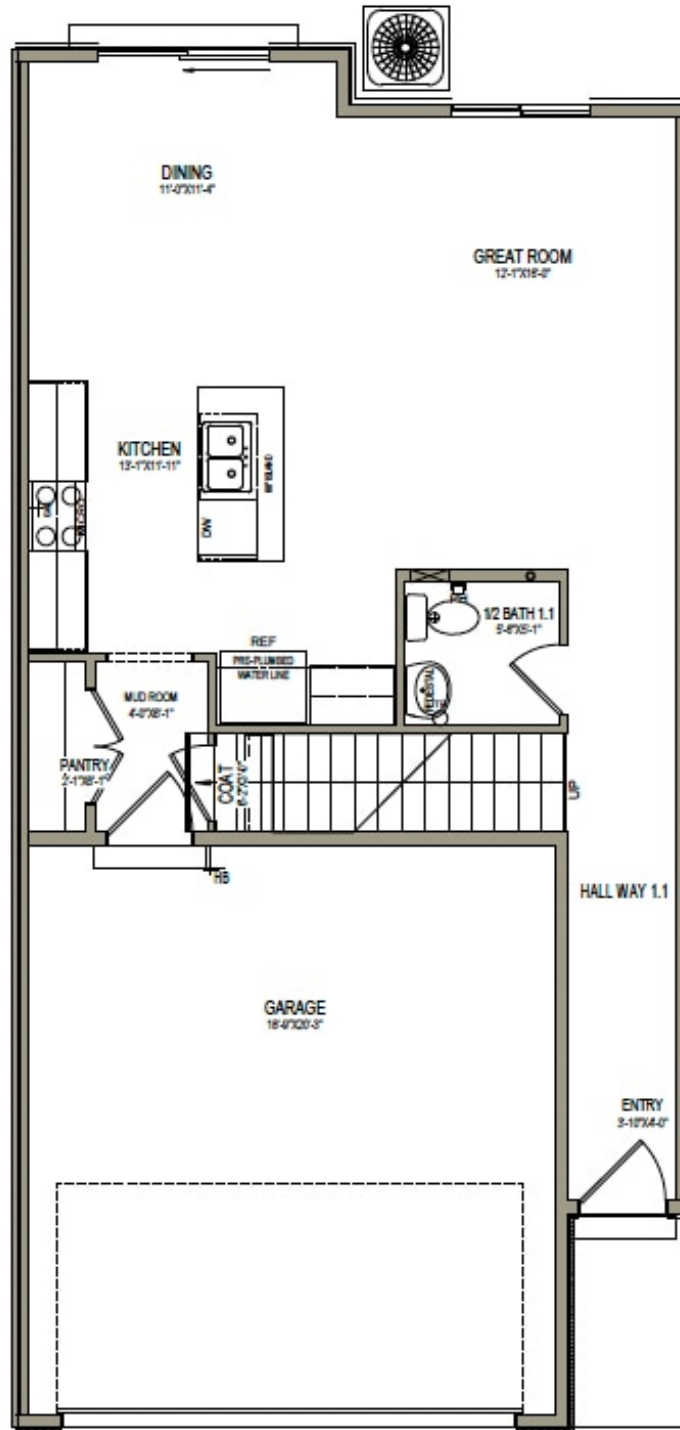
435.228.4702
visionaryhomes.com

www.visionaryhomes.com



www.visionaryhomes.com

MAIN LEVEL

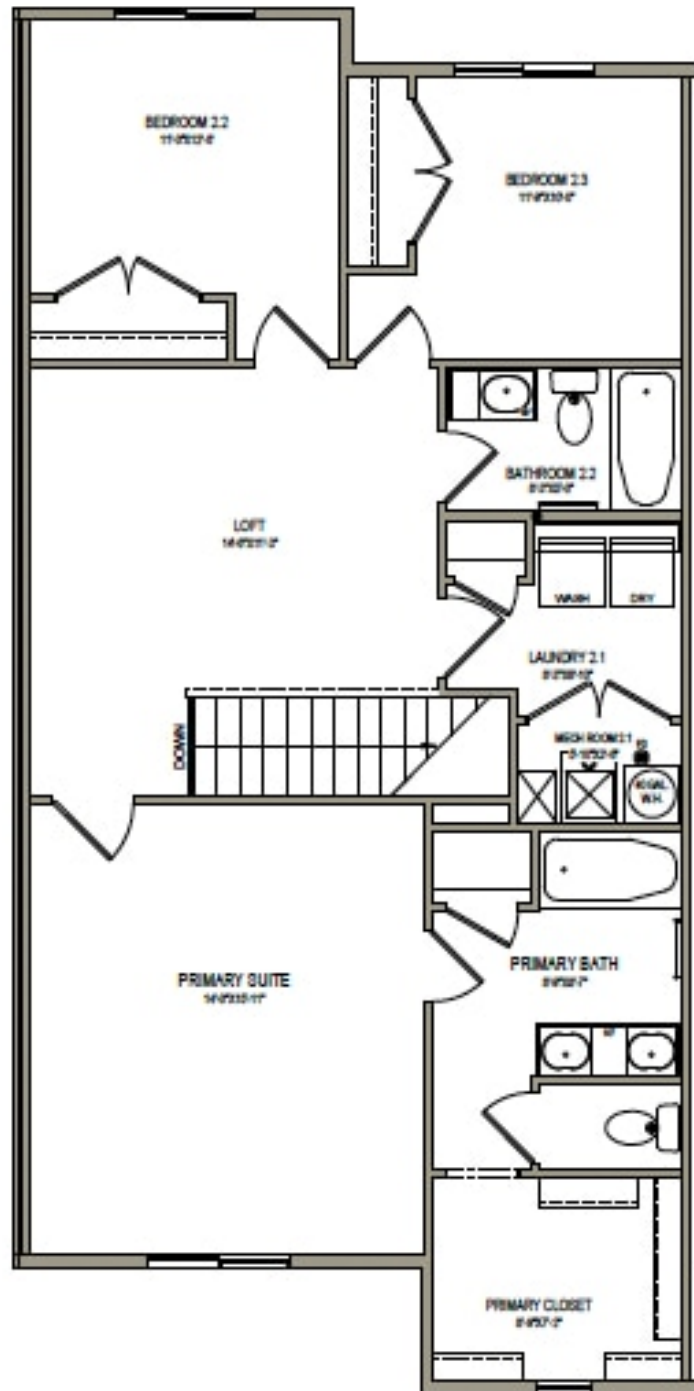


*Visionary Homes reserves the right to change prices without notice.
Approximate square footage and options shown in plan may not be included in base price.

435.228.4702
[visionaryhomes.com](http://www.visionaryhomes.com)

www.visionaryhomes.com

UPPER LEVEL



*Visionary Homes reserves the right to change prices without notice.
Approximate square footage and options shown in plan may not be included in base price.

435.228.4702
visionaryhomes.com