



THE ABERDEEN

435.228.4702
visionaryhomes.com



4-6 BEDROOMS | 2.5-3.5 BATHS | 2-3 CAR GARAGE
2,501-3,503 FINISHED SQ. FT.



TRADITIONAL



FARMHOUSE



CRAFTSMAN

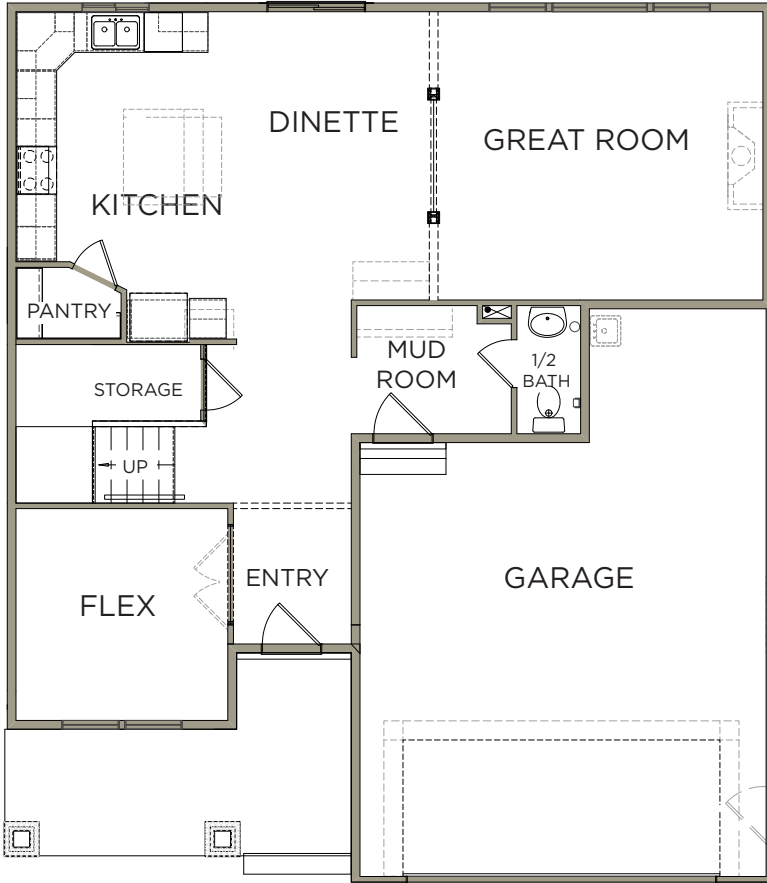
**Visionary Homes reserves the right to change specifications without notice.
Approximate sq. footage and options shown in plan may not be included in base price.*

SCAN FOR MORE INFO
435.228.4702
visionaryhomes.com



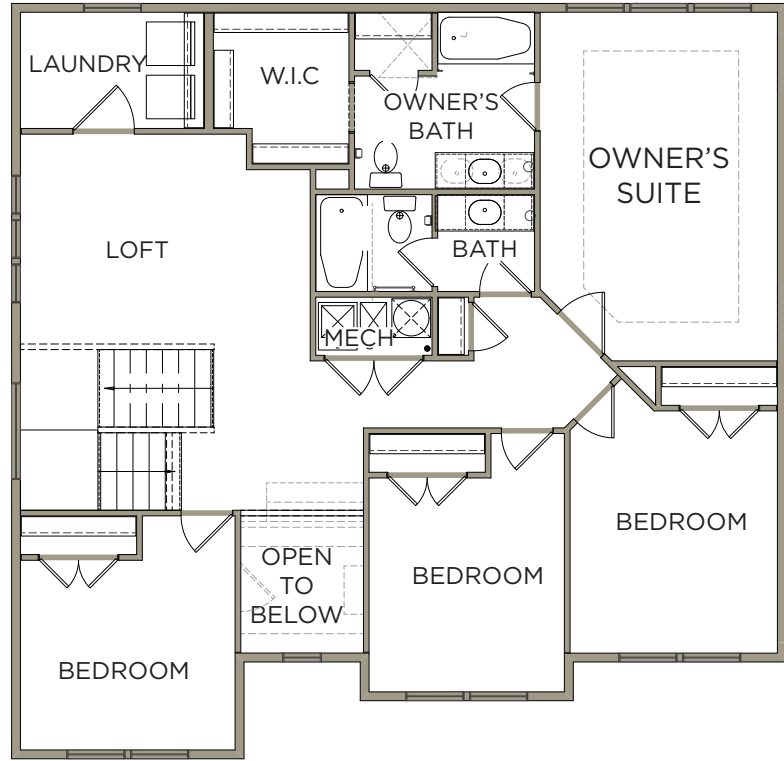
MAIN LEVEL

1,104 SQ. FT.



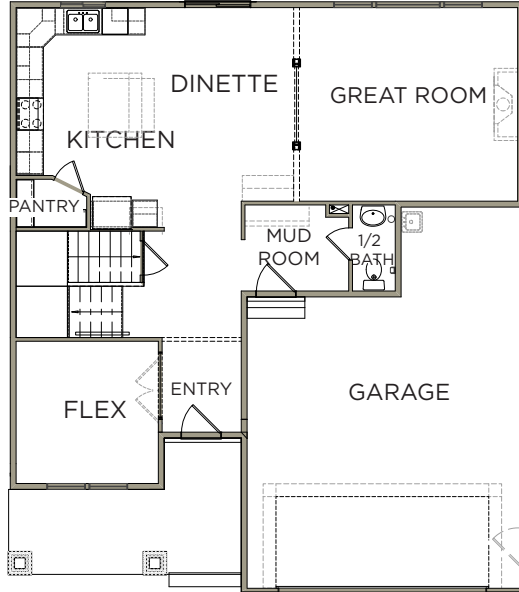
UPPER LEVEL

1,397 SQ. FT.



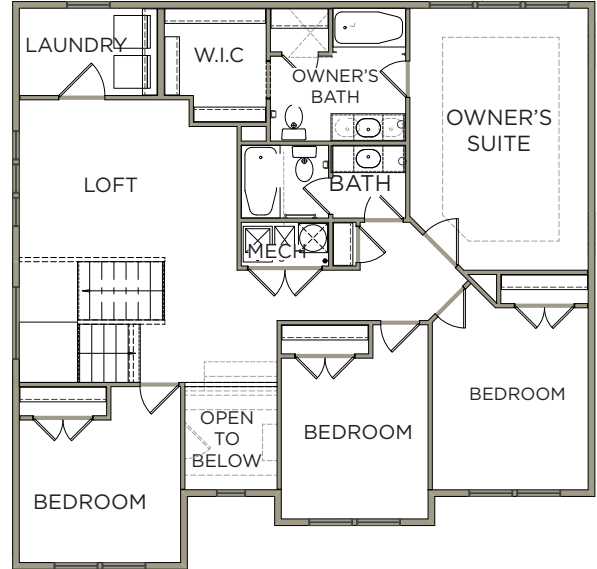
MAIN LEVEL

1,104 SQ. FT.



UPPER LEVEL

1,397 SQ. FT.



BASEMENT

1,002 SQ. FT.

