

THE IRIS

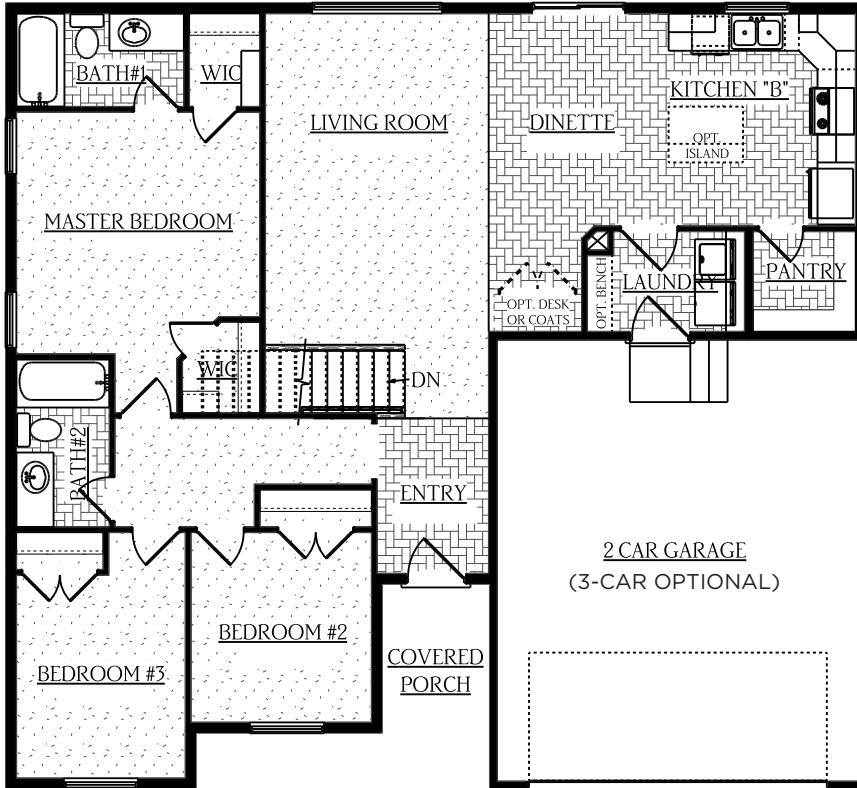


THE IRIS

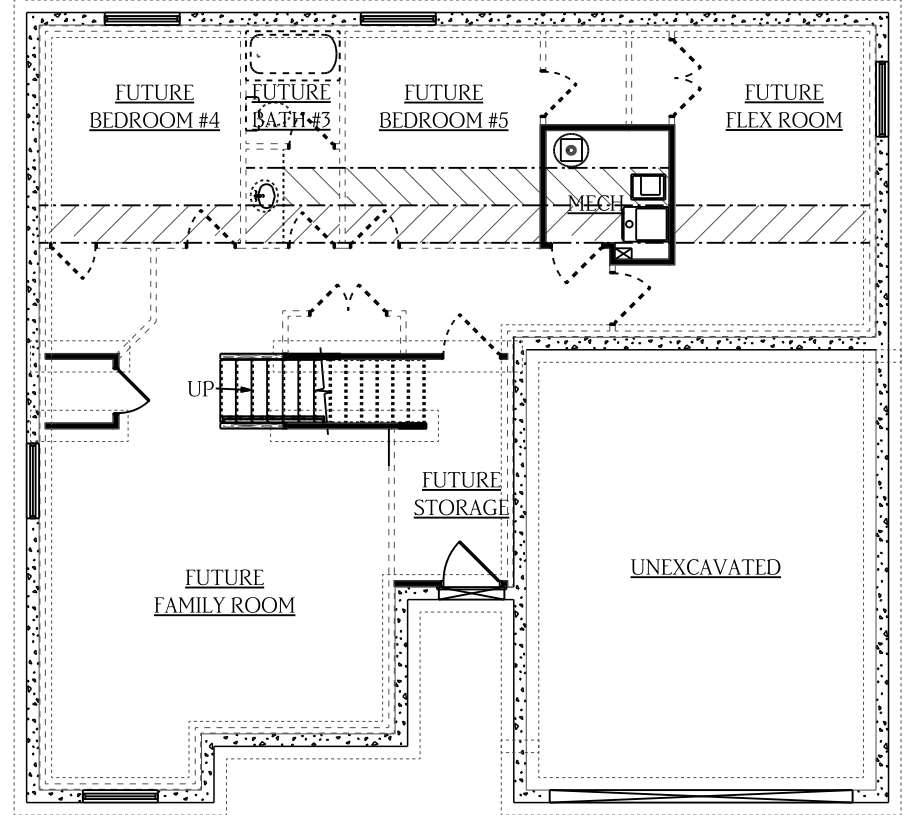
3 BEDS | 2 BATHS | 2 CAR GARAGE

TOTAL SQUARE FEET*: 2,760 (including unfinished basement) | Dimensions: 46' x 42'

MAIN LEVEL | 1,380 SQ. FT.



UNFINISHED BASEMENT | 1,380 SQ. FT.



*Plans and square footage are approximate and subject to change.