



THE REMINGTON

435.228.4702
visionaryhomes.com



4-6 BEDROOMS | 2.5-3.5 BATHS | 2-3 CAR GARAGE
2,876-4,448 FINISHED SQ. FT.



ELEVATION A



ELEVATION B

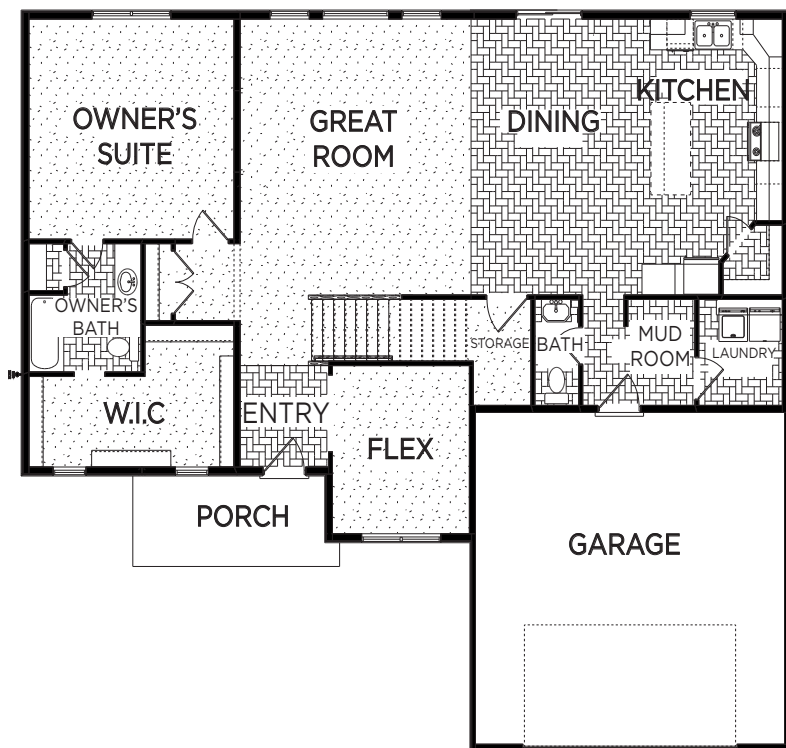
**Visionary Homes reserves the right to change specifications without notice.
Approximate sq. footage and options shown in plan may not be included in base price.*

SCAN FOR MORE INFO
435.228.4702
visionaryhomes.com



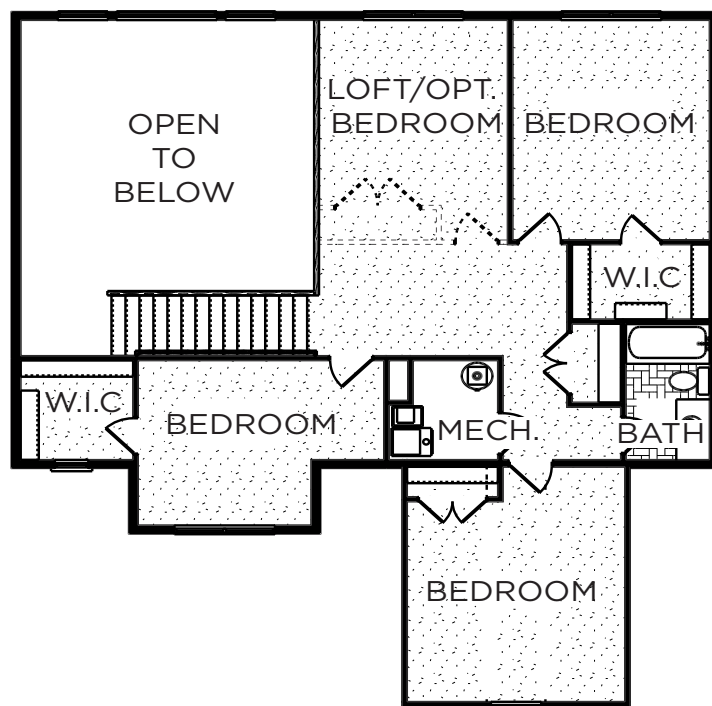
MAIN LEVEL

1,690 SQ. FT.



UPPER LEVEL

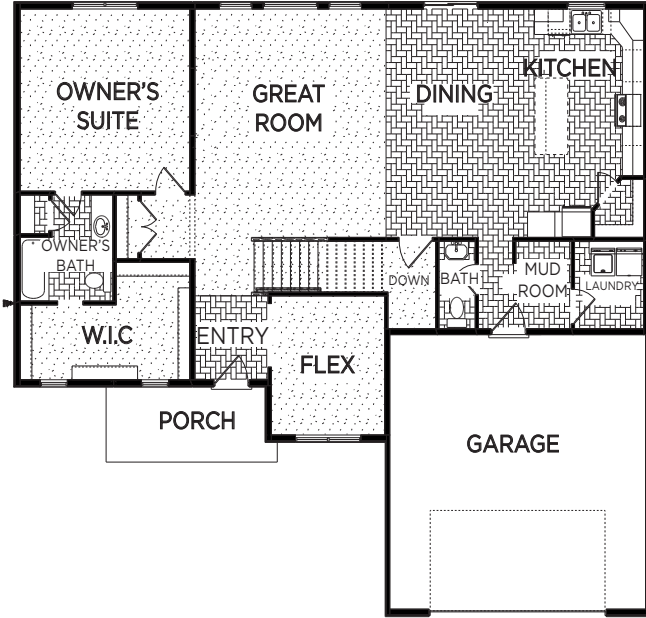
1,186 SQ. FT.



OPTIONAL BASEMENT

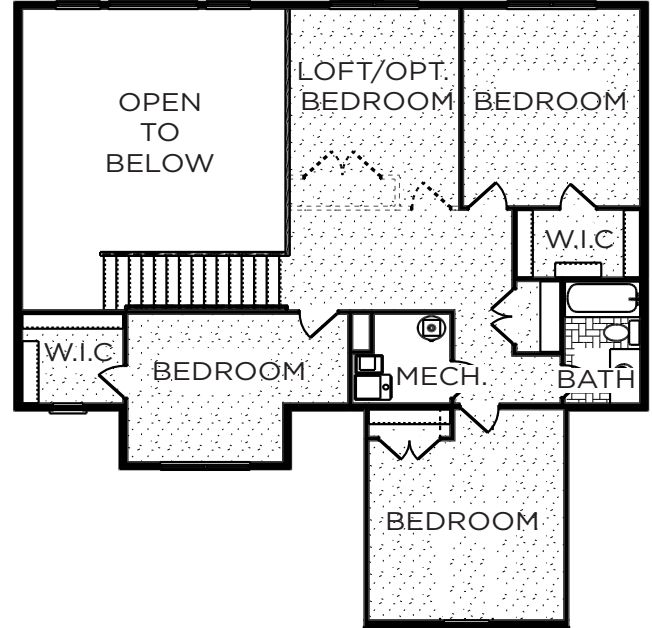
MAIN LEVEL

1,690 SQ. FT.



UPPER LEVEL

1,186 SQ. FT.



BASEMENT

1,572 SQ. FT.

