

# THE OXFORD



*Options shown in rendering may not be included in base price.*



ELEVATION "A"



ELEVATION "B"



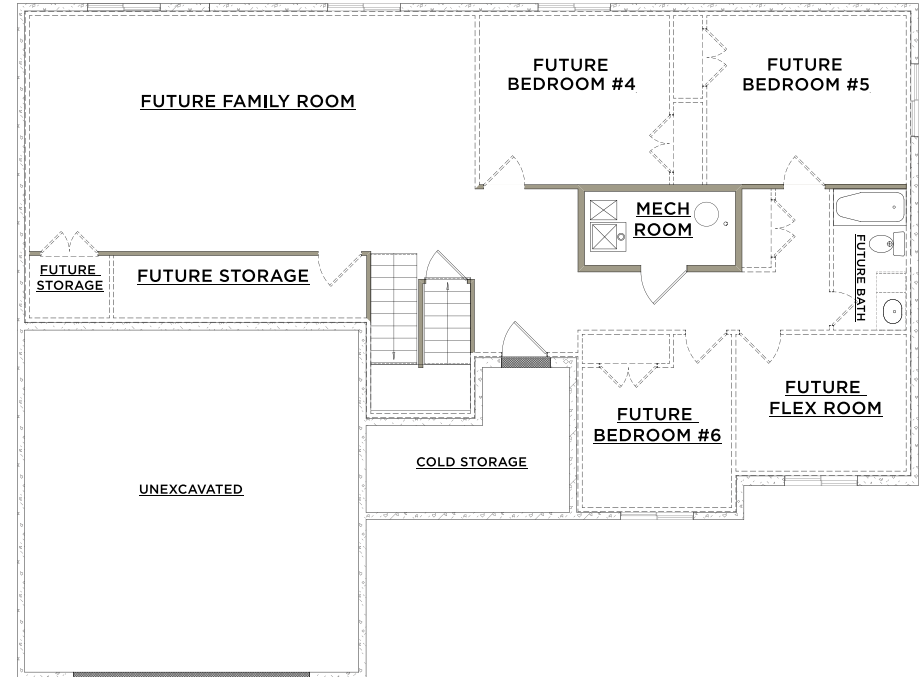
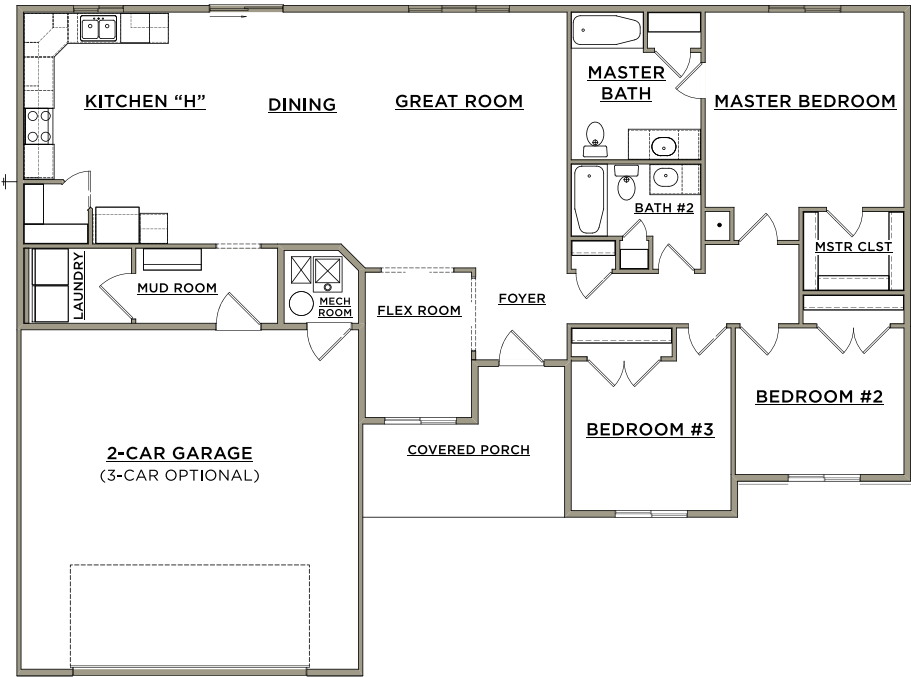
# THE OXFORD

3 BEDS | 2 BATHS | 2 CAR GARAGE

TOTAL SQUARE FEET\*: 3,260 (including 1,630 sq. ft. unfinished basement) | Dimensions: 59' x 46'

MAIN LEVEL | 1,630 SQ. FT.

UNFINISHED BASEMENT | 1,630 SQ. FT.



*\*Plans and square footage are approximate and subject to change.*