



THE SUMMERLYN

435.228.4702
visionaryhomes.com



3-7 BEDROOMS | 2-3 BATHS | 2-3 CAR GARAGE
1,921-3,711 FINISHED SQ. FT.



FARMHOUSE



PRAIRIE



CRAFTSMAN

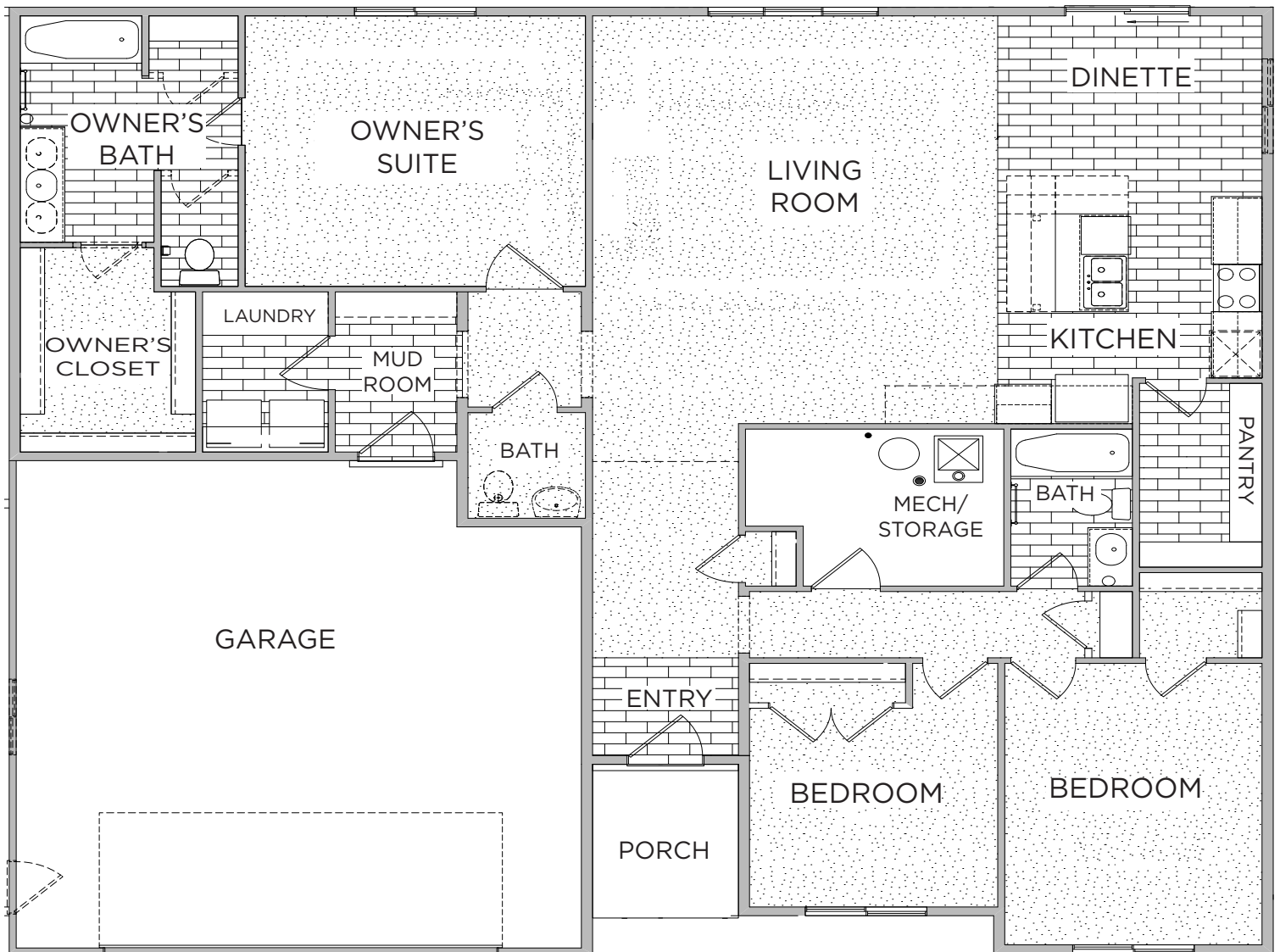
**Visionary Homes reserves the right to change specifications without notice.
Approximate sq. footage and options shown in plan may not be included in base price.*

SCAN FOR MORE INFO
435.228.4702
visionaryhomes.com



MAIN LEVEL

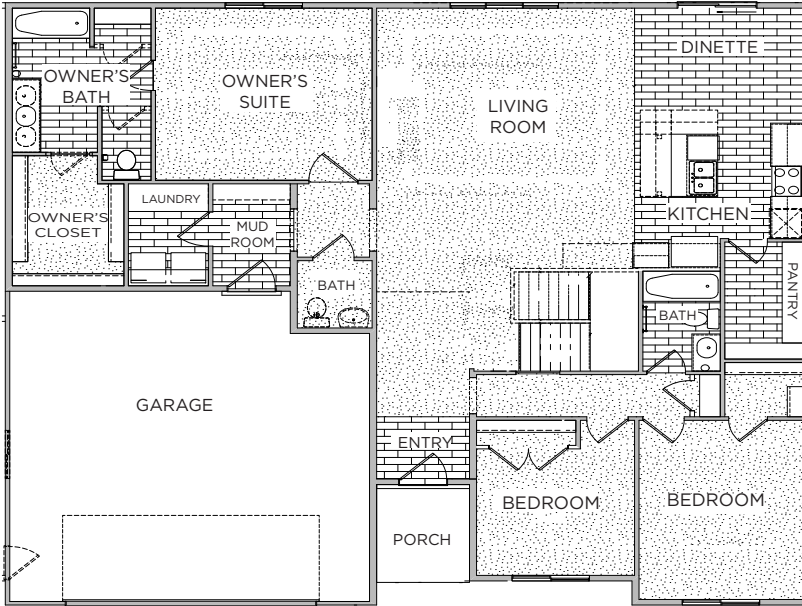
1,921 SQ. FT.



OPTIONAL BASEMENT

MAIN LEVEL

1,921 SQ. FT.



BASEMENT

1,790 SQ. FT.

