



# DESERT COLOR TOWNHOMES

801.210.0985  
MEAD



3 BEDROOMS | 2.5 BATHS | 2 CAR GARAGE  
1,701-1,714 FINISHED SQ. FT.

## HOME FEATURES

- Open Kitchen and Dinette
- Large Walk-In Pantry
- Homeowner's Suite Walk-in Closet
- Spacious Laundry Room
- Access to Garage From Inside Townhome
- 5' Kitchen Island
- Granite or Quartz Countertops (Per Plan Pkg)
- Master Planned Community
- Landscaping Included

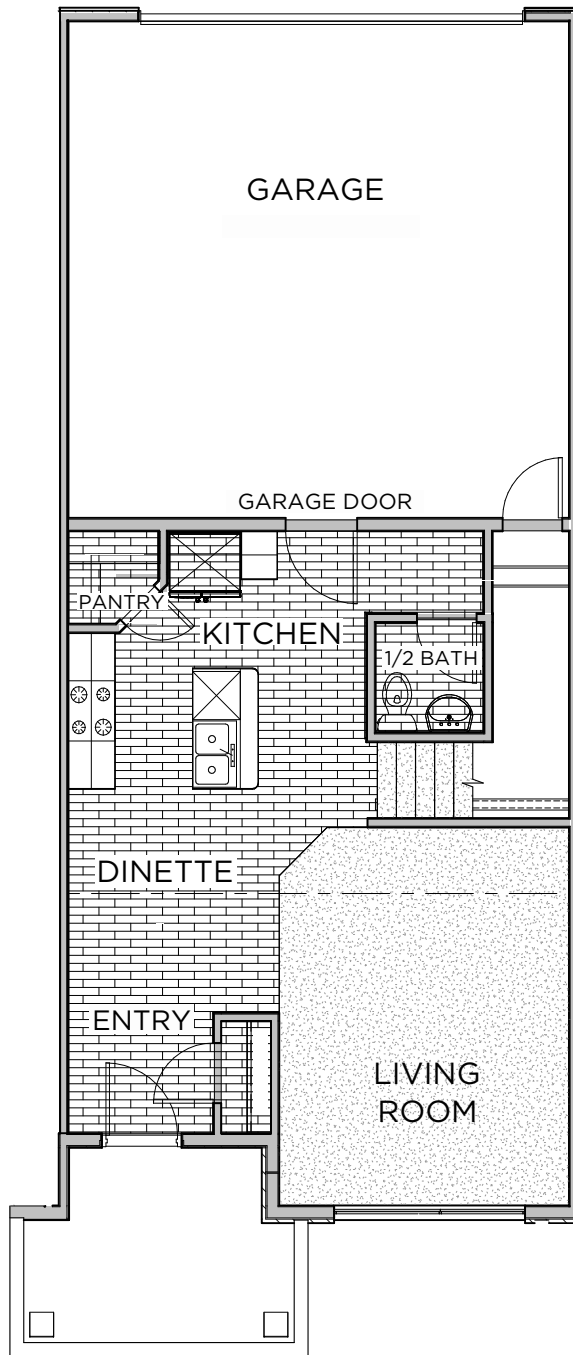
*\*Visionary Homes reserves the right to change specifications without notice.  
Approximate sq. footage and options shown in plan may not be included in base price.*

**SCAN FOR MORE INFO**  
801.210.0985  
visionaryhomes.com



## MAIN LEVEL

602-607 SQ. FT.



## UPPER LEVEL

1,099-1,107 SQ. FT.

