



DESERT COLOR TOWNHOMES

801.210.0985
YUCCA



4 BEDROOMS | 2.5 BATHS | 2 CAR GARAGE
2,150 FINISHED SQ. FT.

HOME FEATURES

- Open Kitchen and Dining
- Large Walk-in Pantry
- Owner's Suite Walk-in Closet
- Owner's Suite on Main Floor
- Access to Garage From Inside Townhome
- 5' Kitchen Island
- Quartz Countertops
- Exterior Unit
- Master Planned Community
- Landscaping Included

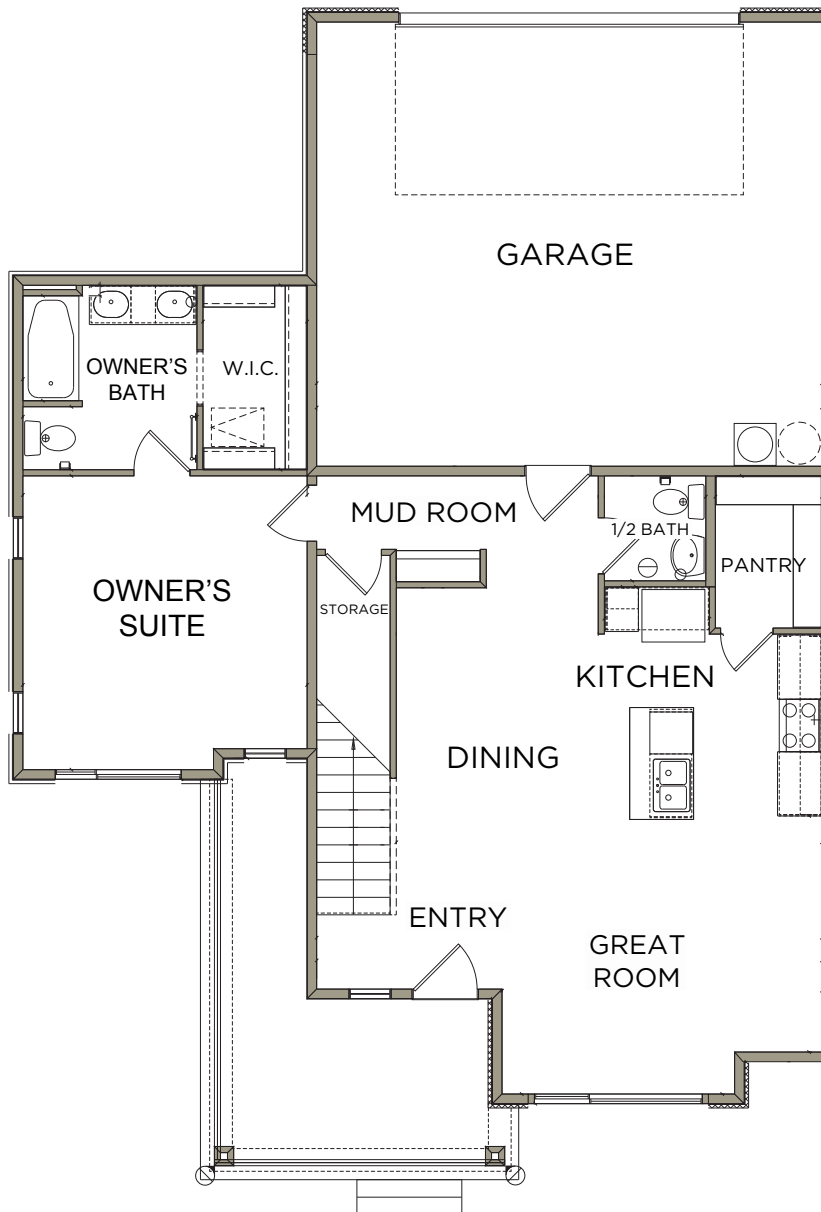
**Visionary Homes reserves the right to change specifications without notice.
Approximate sq. footage and options shown in plan may not be included in base price.*

SCAN FOR MORE INFO
801.210.0985
visionaryhomes.com



MAIN LEVEL

1,023 SQ. FT.



UPPER LEVEL

1,128 SQ. FT.

