



3-7 BEDROOMS | 2.5-3.5 BATHS | 2-3 CAR GARAGE
2,295-3,349 FINISHED SQ. FT.



TRADITIONAL



FARMHOUSE

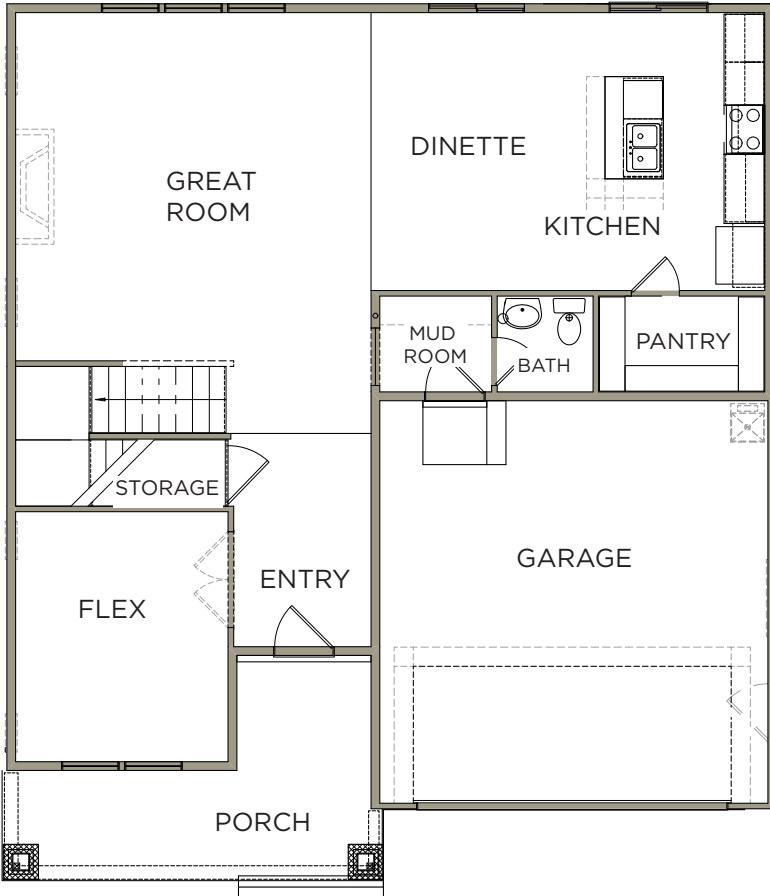


CRAFTSMAN



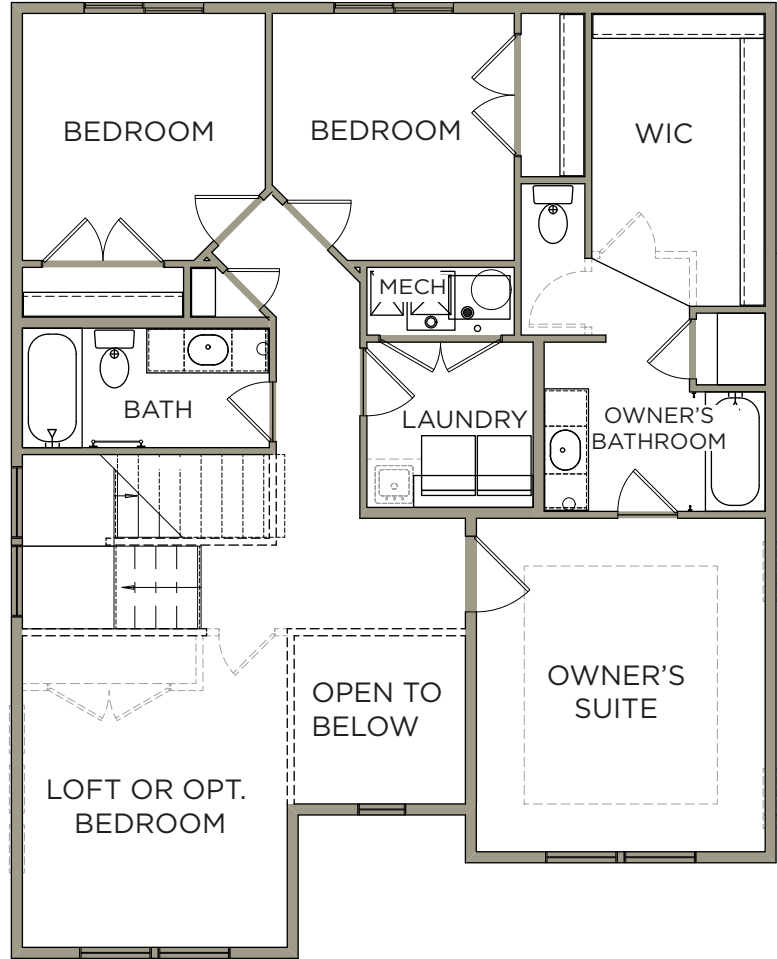
MAIN LEVEL

1,159 SQ. FT.



UPPER LEVEL

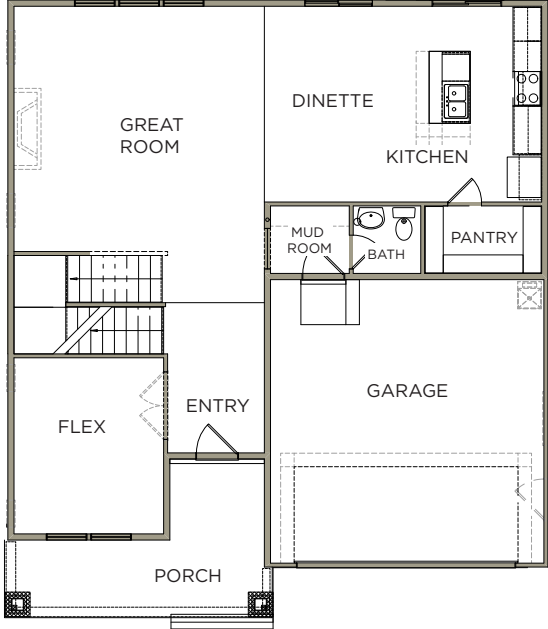
1,136 SQ. FT.



OPTIONAL BASEMENT

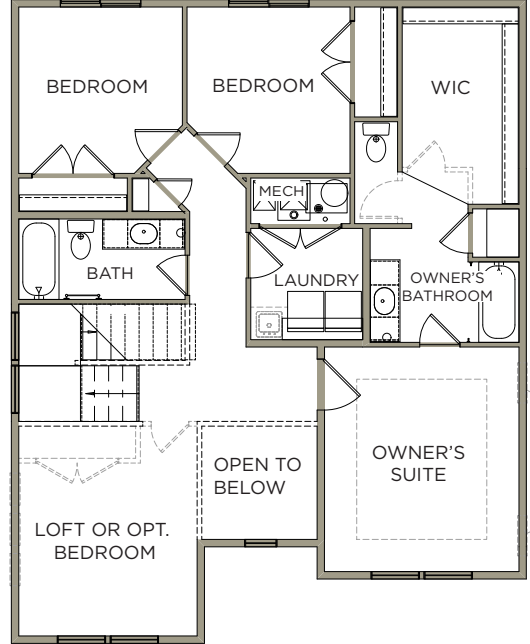
MAIN LEVEL

1,159 SQ. FT.



UPPER LEVEL

1,136 SQ. FT.



BASEMENT

1,054 SQ. FT.

