



ARCHIBALD ESTATES TOWNHOMES

435.246.4785
MEDFORD A



3 BEDROOMS | 2.5 BATHS | 2 CAR GARAGE
1,476 FINISHED SQ. FT.

HOME FEATURES

- Open Kitchen and Dinette
- Large Walk-in Pantry
- Owner's Suite Walk-in Closet
- Spacious Laundry Room
- Access to Garage From Inside Townhome
- Kitchen Peninsula with Overhang
- Granite or Quartz Countertops (Per Plan Pkg)
- Exterior Townhome Unit
- Master Planned Community
- Landscaping Included

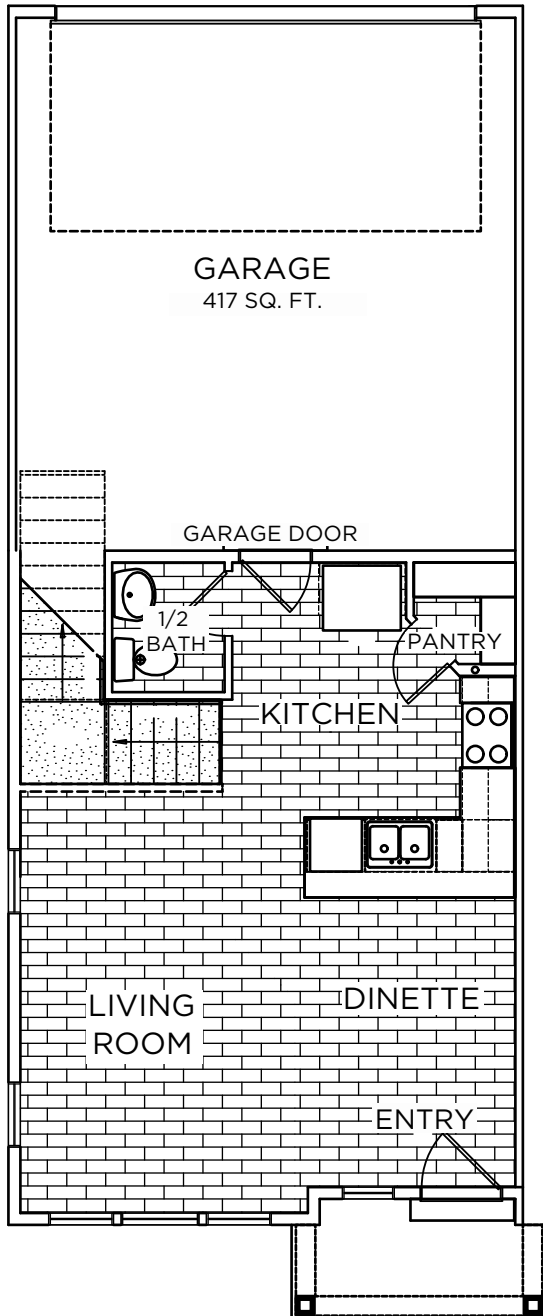
**Visionary Homes reserves the right to change specifications without notice.
Approximate sq. footage and options shown in plan may not be included in base price.*

SCAN FOR MORE INFO
435.246.4785
visionaryhomes.com



MAIN LEVEL

508 SQ. FT.



UPPER LEVEL

968 SQ. FT.

