



AZALEA TOWNHOMES

435.236.2054
SIERRA VISTA A



3 BEDROOMS | 2.5 BATHS | 2 CAR GARAGE
1,675 FINISHED SQ. FT.

HOME FEATURES

- Open Kitchen and Dining
- Large Walk-In Pantry
- 5' Kitchen Island
- Spacious Laundry Room
- Attached Rear-Load Garage
- Owner's Suite Walk-in Closet
- Owner's Suite Balcony
- Community Pool and Shaded Playground
- Landscaping Included
- Exterior Unit

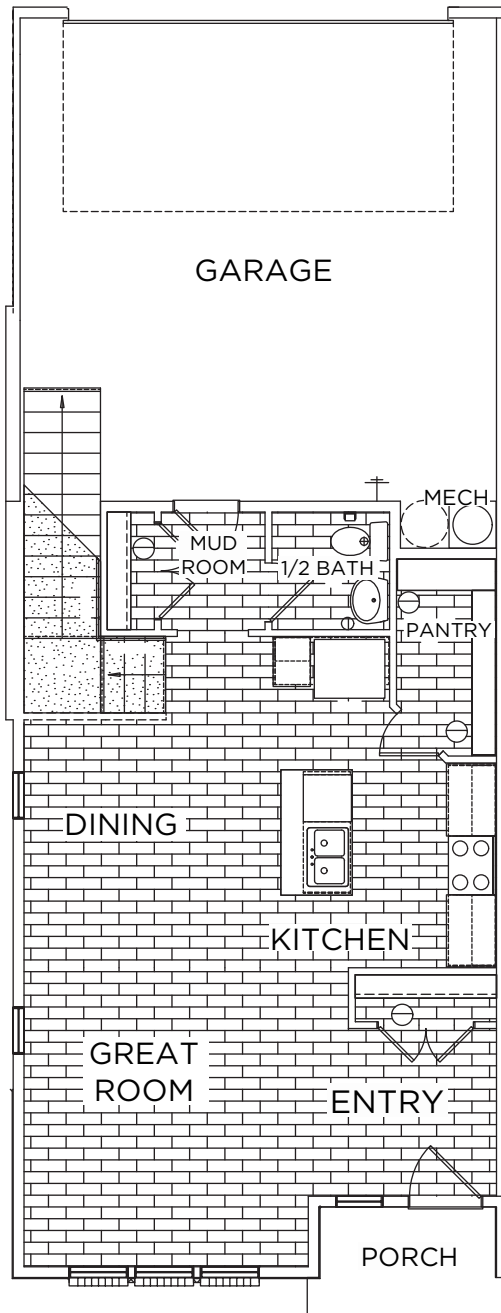
**Visionary Homes reserves the right to change specifications without notice.
Approximate sq. footage and options shown in plan may not be included in base price.*

SCAN FOR MORE INFO
435.236.2054
visionaryhomes.com



MAIN LEVEL

667 SQ. FT.



UPPER LEVEL

1,008 SQ. FT.

