



# PROMINENCE POINT TOWNHOMES

801.948.2673  
SITKA B



**3 BEDROOMS | 2.5 BATHS | 2 CAR GARAGE  
1,556 FINISHED SQ. FT.**

## HOME FEATURES

- Open Kitchen and Living Room
- Spacious Laundry Room
- Owner's Suite Walk-in Closet
- Interior Unit
- Attached Rear Load Garage
- Walk-in Pantry
- 8' Kitchen Peninsula with Overhang
- One-Tone Paint
- Landscaping Included
- Community Clubhouse, Pool, and Pickleball

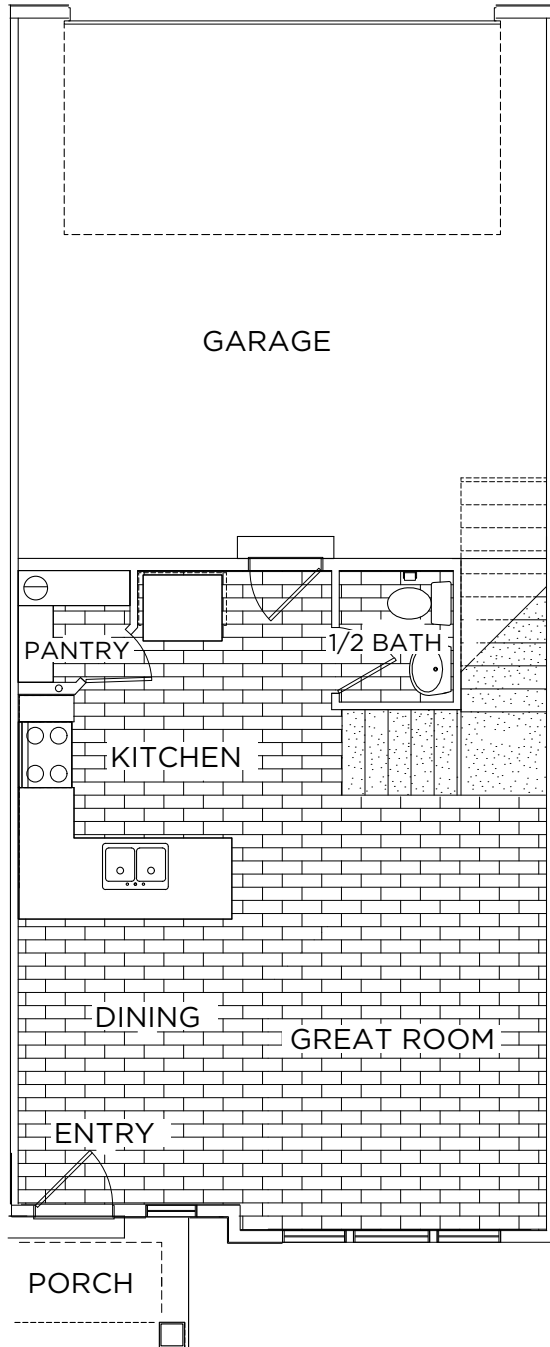
*\*Visionary Homes reserves the right to change specifications without notice.  
Approximate sq. footage and options shown in plan may not be included in base price.*

**SCAN FOR MORE INFO**  
801.948.2673  
visionaryhomes.com



## MAIN LEVEL

529 SQ. FT.



## UPPER LEVEL

1,027 SQ. FT.

