



THE BRIDGER

801.978.5749
visionaryhomes.com



TRADITIONAL

3-6 BEDROOMS | 2-3 BATHS | 2-3 CAR GARAGE
1,433-2,755 SQ. FT.



FARMHOUSE



CRAFTSMAN

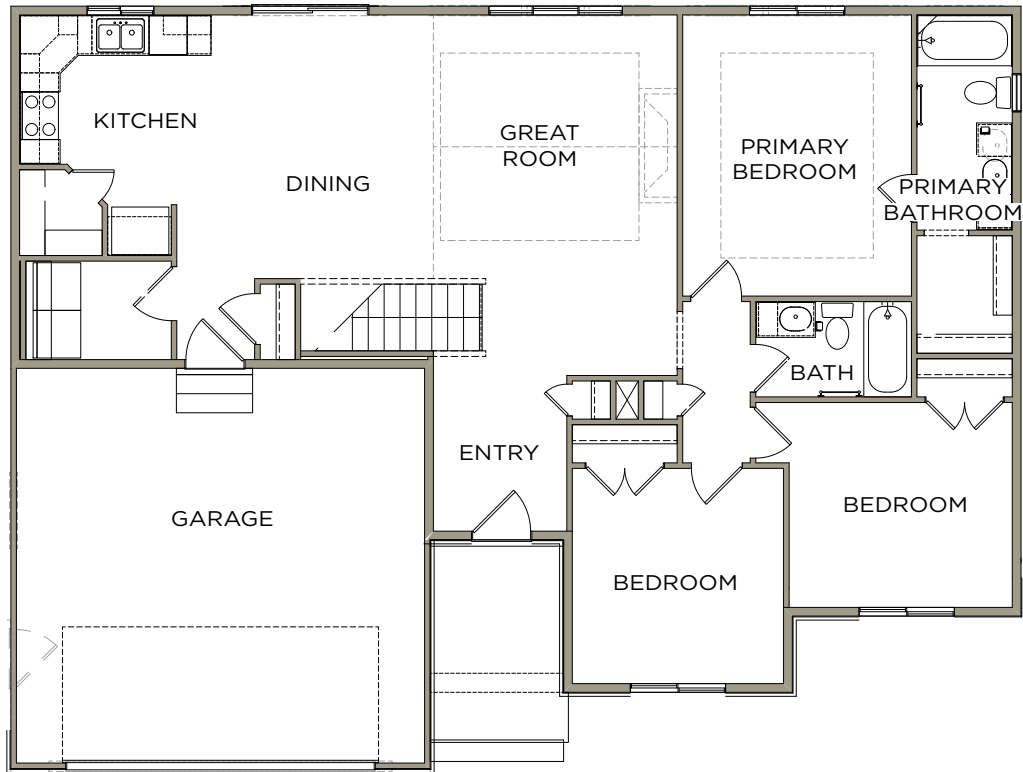
**Visionary Homes reserves the right to change specifications without notice.
Approximate sq. footage and options shown in plan may not be included in base price.*

SCAN FOR MORE INFO
801.978.5749
visionaryhomes.com



MAIN LEVEL

1,433 SQ. FT.



BASEMENT

1,322 SQ. FT.

