



THE MENDON

801.516.4639

FENN FARMS



FARMHOUSE

3-5 BEDROOMS | 2-3 BATHS | 2-3 CAR GARAGE
1,128-2,268 SQ. FT.



TRADITIONAL



CRAFTSMAN

**Visionary Homes reserves the right to change specifications without notice.
Approximate sq. footage and options shown in plan may not be included in base price.*

SCAN FOR MORE INFO

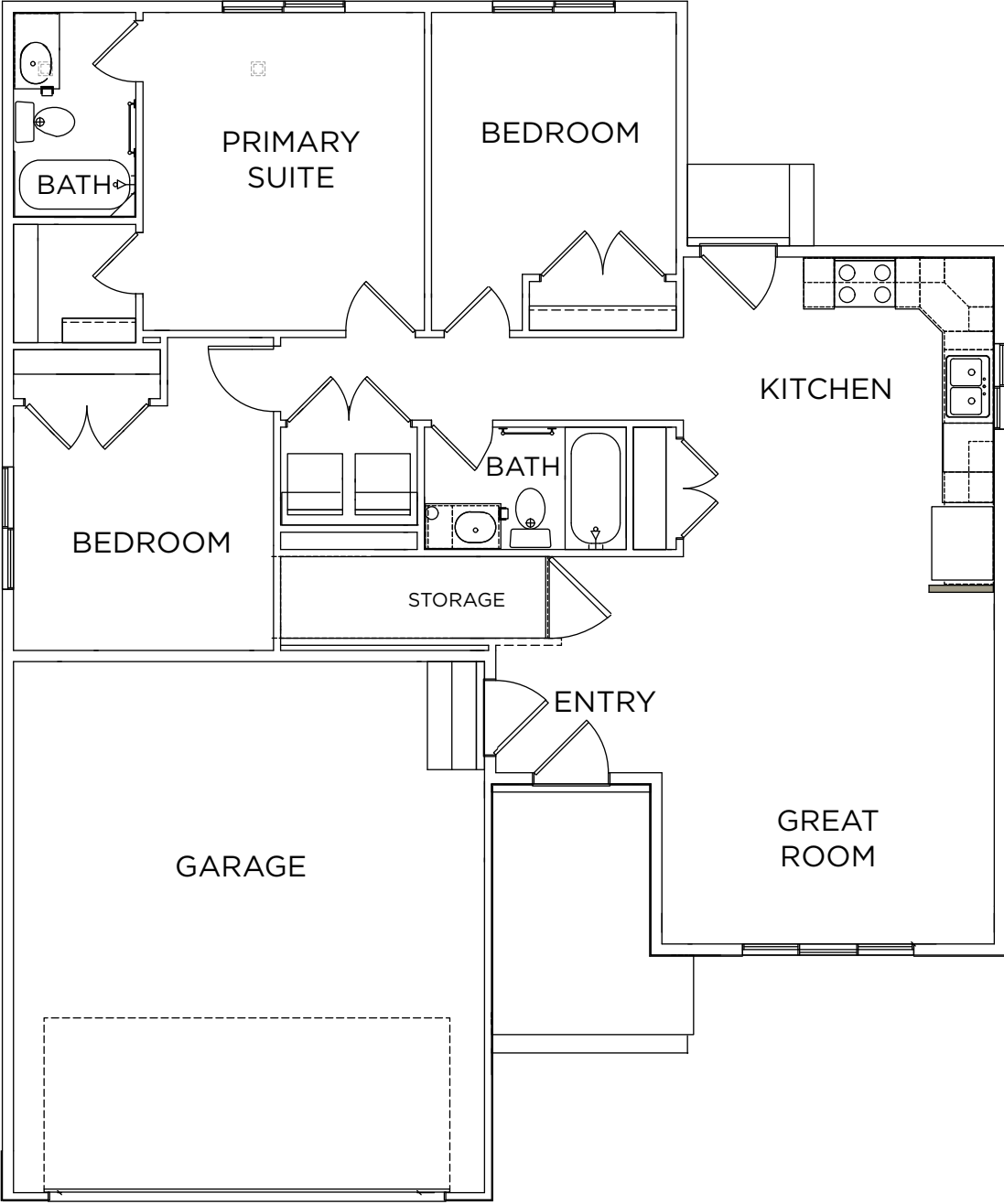
801.516.4639

visionaryhomes.com



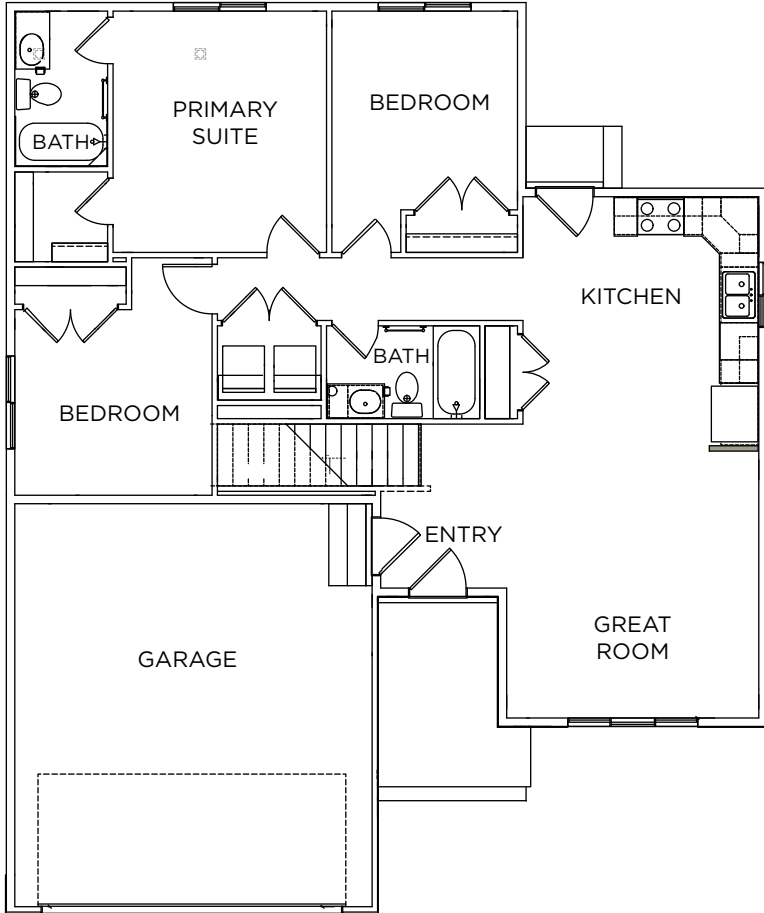
MAIN LEVEL

1,153 SQ. FT.



MAIN LEVEL

1,153 SQ. FT.



BASEMENT

1,050 SQ. FT.

