



THE FIELDING

801.978.5749

FENN FARMS



FARMHOUSE

4-5 BEDROOMS | 2.5 BATHS | 2-3 CAR GARAGE
2,501 FINISHED SQ. FT.



TRADITIONAL



CRAFTSMAN

**Visionary Homes reserves the right to change specifications without notice.
Approximate sq. footage and options shown in plan may not be included in base price.*

SCAN FOR MORE INFO

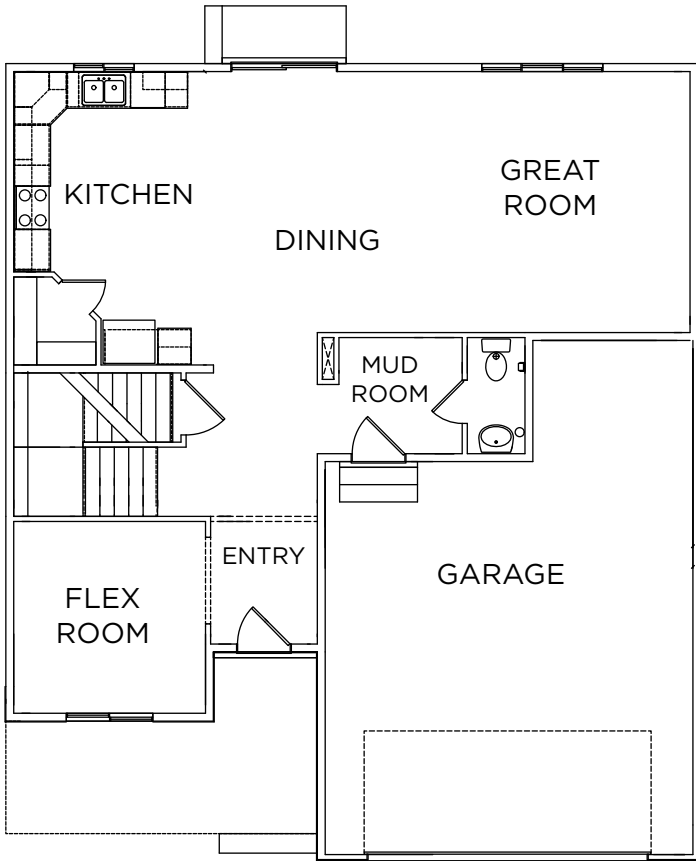
801.978.5749

visionaryhomes.com



MAIN LEVEL

1,104 SQ. FT.



UPPER LEVEL

1,397 SQ. FT.

