



**DESERT TERRITORIAL**

**4-5 BEDROOMS | 2.5 BATHS | 2-3 CAR GARAGE**  
**2,250 FINISHED SQ. FT.**



**DESERT CRAFTSMAN**



**DESERT COTTAGE**



**SPANISH MISSION**



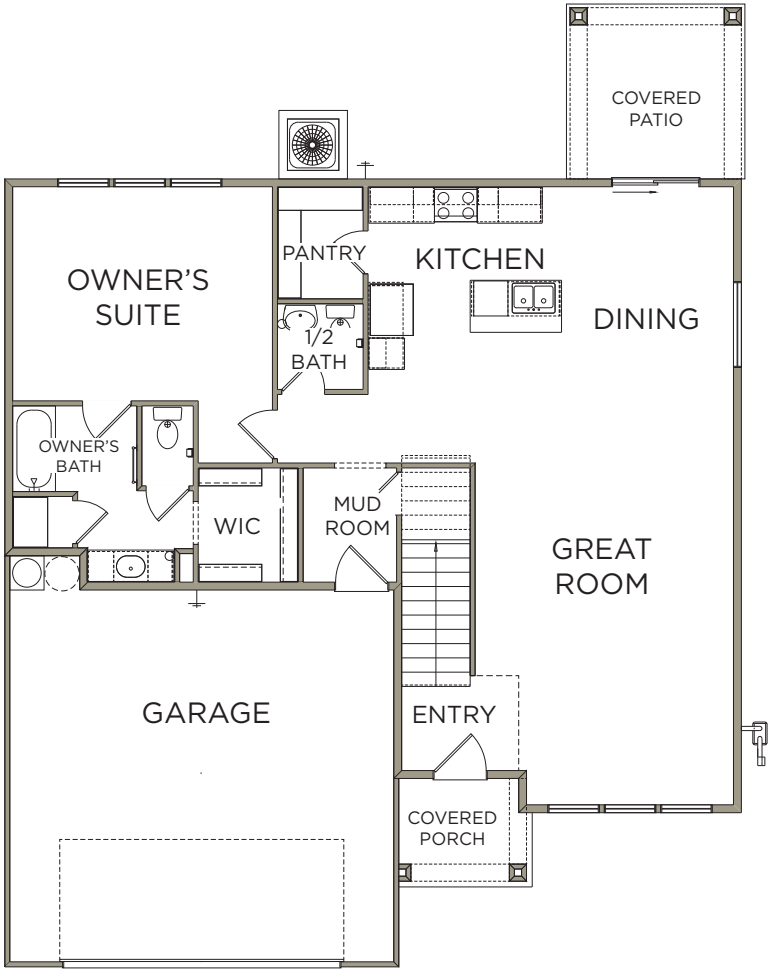
**DESERT MODERN**

*\*Visionary Homes reserves the right to change specifications without notice.  
Approximate sq. footage and options shown in plan may not be included in base price.*



# MAIN LEVEL

1,272 SQ. FT.



# UPPER LEVEL

978 SQ. FT.

