



DESERT COLOR TOWNHOMES

801.210.0985
MEAD



3 BEDROOMS | 2.5 BATHS | 2 CAR GARAGE
1,701-1,714 FINISHED SQ. FT.

HOME FEATURES

- Open Kitchen and Dinette
- Large Walk-In Pantry
- Homeowner's Suite Walk-in Closet
- Spacious Laundry Room
- Access to Garage From Inside Townhome
- 5' Kitchen Island
- Granite or Quartz Countertops (Per Plan Pkg)
- Master Planned Community
- Landscaping Included
- Exterior Units

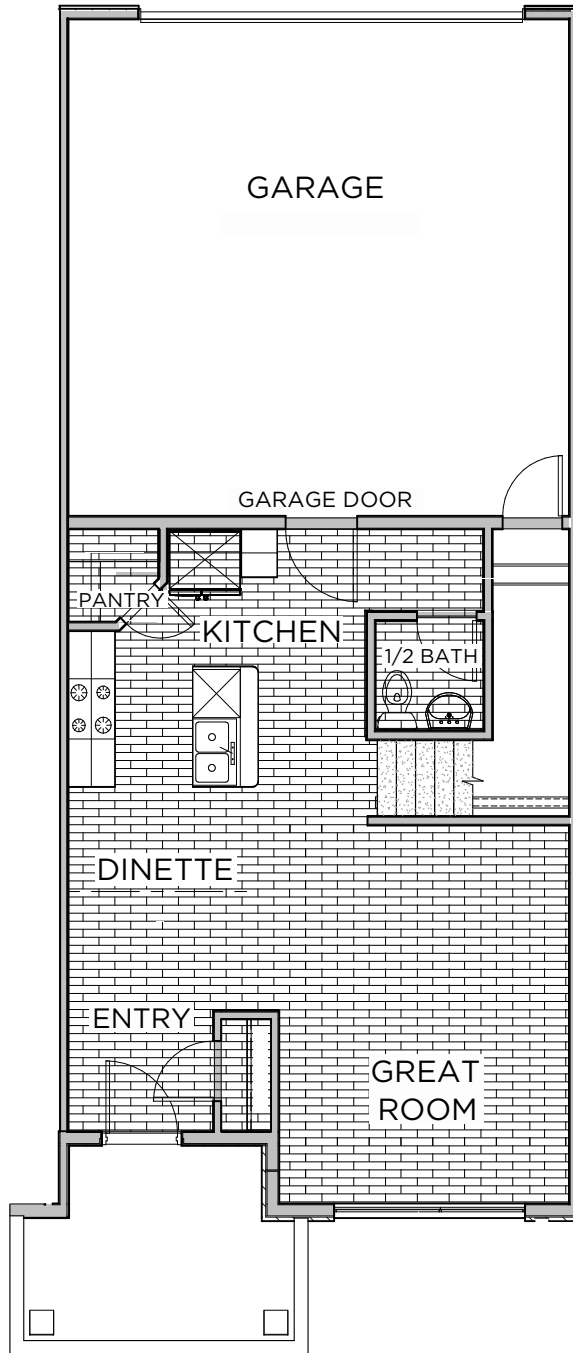
**Visionary Homes reserves the right to change specifications without notice.
Approximate sq. footage and options shown in plan may not be included in base price.*

SCAN FOR MORE INFO
801.210.0985
visionaryhomes.com



MAIN LEVEL

602-607 SQ. FT.



UPPER LEVEL

1,099-1,107 SQ. FT.

