



ANELA
THE ODYSSEY

801.900.4734



3-4 BEDROOMS | 2.5-3.5 BATH | 2 CAR GARAGE
1,530 FINISHED SQ. FT. | 2,200 TOTAL SQ. FT.

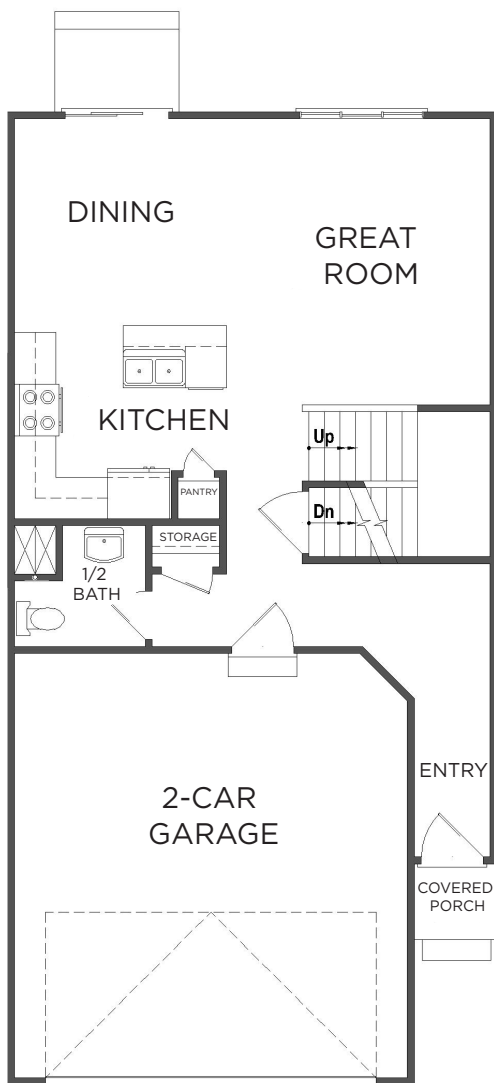
HOME FEATURES

- Open Kitchen and Living Room
- Kitchen Island
- Homeowner's Suite Walk-in Closet
- Mud and Laundry Room off Garage
- Control4 Home Automation
- Front Entry 2-Car Garage
- Interior Townhome Unit
- 9' Ceilings on Main Floor
- Granite Countertops
- Faux Wood Blinds on All Windows
- 95% Efficient Furnace
- Full Yard Landscaping
- Concrete Patio in Rear

**Visionary Homes reserves the right to change specifications without notice.
Approximate sq. footage and options shown in plan may not be included in base price.*

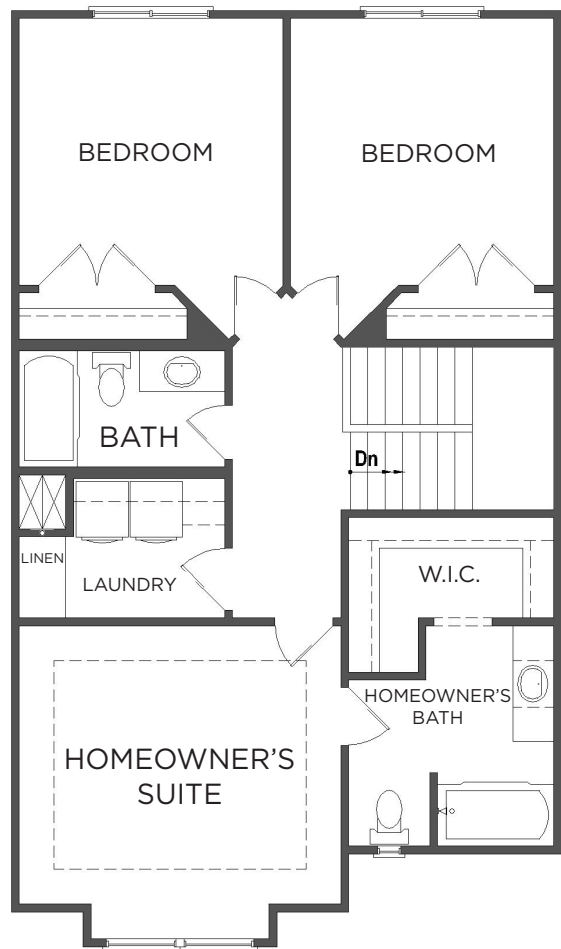
SCAN FOR MORE INFO
801.900.4734
visionaryhomes.com





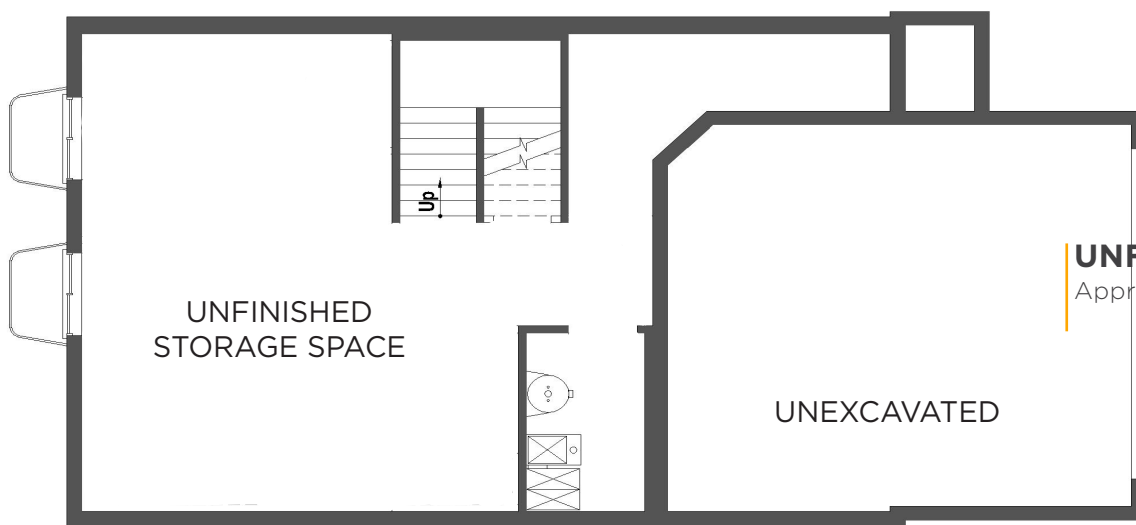
MAIN FLOOR

Approx 676 Sq. Ft.



SECOND FLOOR

Approx 854 Sq. Ft.



UNFINISHED BASEMENT

Approx 670 Sq. Ft.