



THE AVON

801.516.4639

FENN FARMS



TRADITIONAL

3-4 BEDROOMS | 2.5 BATHS | 2-3 CAR GARAGE  
1,950 FINISHED SQ. FT.



FARMHOUSE



CRAFTSMAN

*\*Visionary Homes reserves the right to change specifications without notice.  
Approximate sq. footage and options shown in plan may not be included in base price.*

SCAN FOR MORE INFO

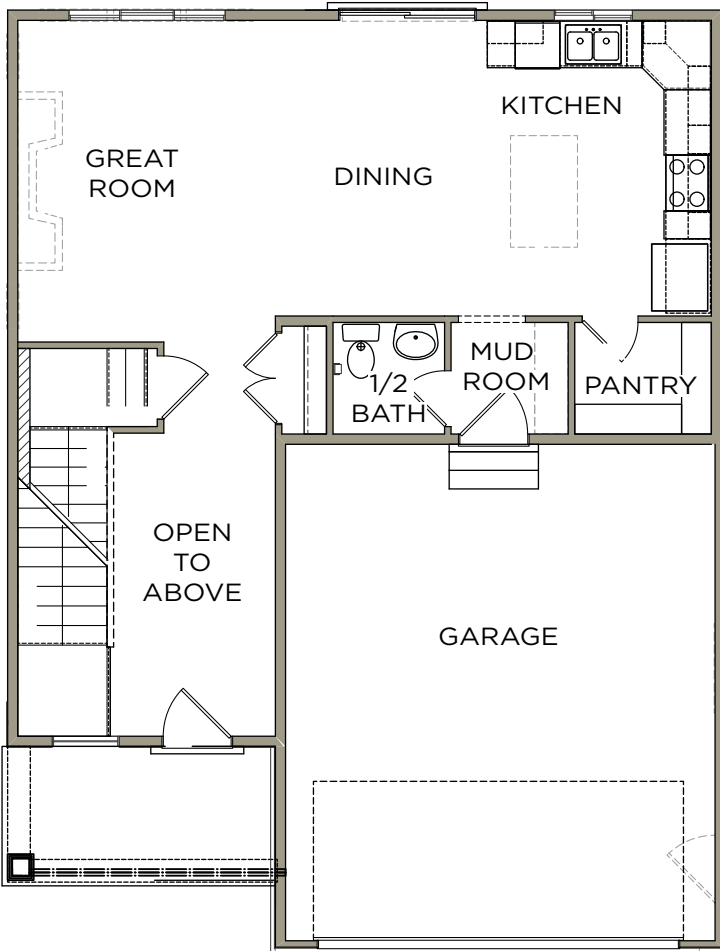
801.516.4639

[visionaryhomes.com](http://visionaryhomes.com)



## MAIN LEVEL

791 SQ. FT.



## UPPER LEVEL

1,158 SQ. FT.

